

Technical rider

Emma Schler, stage manager

+336 24 39 05 20 - techniquearpis@gmail.com

SHIFTS AND STAFF REQUIRED (4hrs per shifts)

Personnel request for setting up :	1 stage manager 1 light head 1 sound/video head	Shifts :	3 shifts
------------------------------------	-------------------------------------------------------	----------	----------

Personnel request for striking the set :	1 stage manager	Shifts :	1 shift
------------------------------------------	-----------------	----------	---------

> **Note** : A hosting stage manager (who will be familiar with the venue and its equipments) will be there upon our arrival. This person will be our «technical link» during the whole of our stay. He or she will need to be reachable at any moment and able to help us solve any problems that might occur.

In order to prepare at best our collaboration, it is essential to receive all your necessary plans of your stage in DWG, JPG or PDF. Your technical rider will be sent to us by mail with your contact details and the deliver address for the set.

> **Pre set-up light, sound and set is compulsory.**

Sound pre set-up : the PA system must be rigged and plugged toward the control booth.

Light pre set-up : our light plot will be pre-hung cabled and patched. We bring some spotlights (as seen on the lighting plot below) so extension cords will be set up in order for us to plug them in at any moment.
Our light-head will set herself up in the the stage right wing, behind the black velvet leg : she needs a small table and a four-socket adapter.

Stage pre set-up : soft goods must be installed.

TECHNICAL FEATURES

Soft goods : Downstage, we need one black velvet leg laid in Italian masking-style (horizontally opening curtain). From there all the way to upstage we need black velvet legs laid in German masking-style (vertically opening curtain). This will be done on both sides of the stage (lighting plot).

Stage : must be covered by a black linoleum dance floor.

Wing/offstage space : right width > 1,70m at least
left width > 1,30m at least

Stage width : 12m (a minimum of 7m80)

Stage depth : 8m (a minimum of 6m)

Clearance under rig : 3m80 (at least 3m80 at the downstage and 2m80 upstage)

Seating capacity : 500 max.

Duration : 50 min

HOSTING CONDITIONS

The company is composed of a mime artist, a light head and a sound/video head. The performer will need a small space in order to warm up as well as a dressing room equipped with lights and mirrors.

As for the lodging situation, a single and a double room will have to be booked. For the catering, 3 vegetarian meals will be needed (including one without fish).

TECHNICAL SUPPLIES NEEDED BY THE COMPANY

- Sound : an adequate sound system including a bass speaker/woofer will be provided
1 digital mixing desk with a mini jack plug
2 wedges
1 microphone stand
- Video : We bring our own video projectors (with rigs and cabling).
- Lighting : The lighting desk will be on stage, in the stage right wing.
A little table, a four-socket adapter and the DMX cable will have to go all the way to the stage right wing.
We bring our own gels and our own lighting control system (D:::Light on computer and an ENTTEC box 5pins)
We bring all of our PAR 16 spotlights planned on the lighting plot. Therefore, extension cords will be set up in order for us to plug them in at any moment
Channels 70, 80 and 90 on the lighting plot are lanterns brought by the Company.
Therefore, 2 extensions cords will be set up on the floor in the stage right wing for those channels to be plugged in.
- Machinery : We provide pulleys and lines according to the plot below.

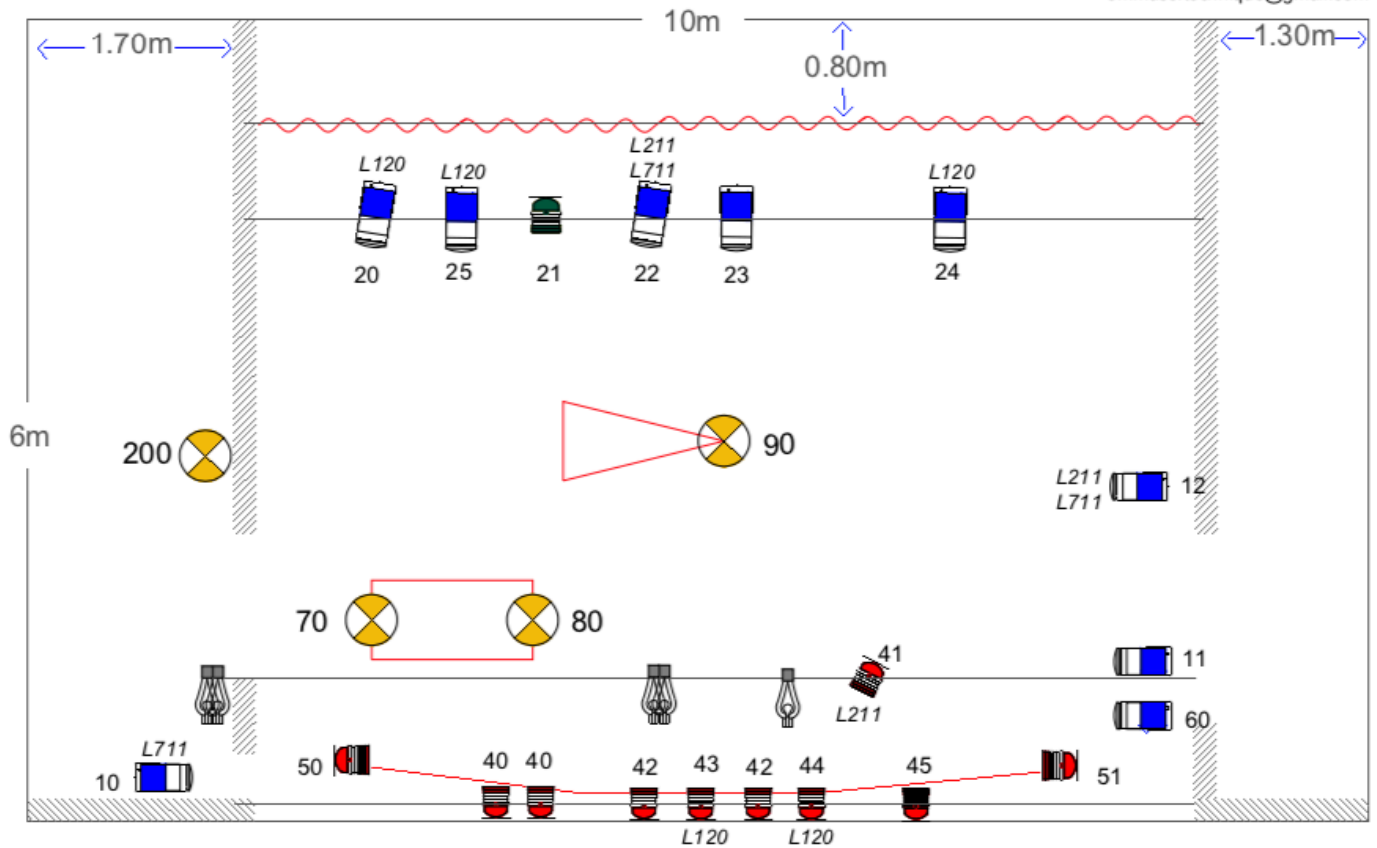
SCENOGRAPHY AND VIDEO

- We provide all the scenography and video supports :
- Scenography includes a house and a boat.
 - A white screen installed upstage (6m x 4,20m) An EasyDrape system and a scrim (9m x 3m)
- The first video projector has to be rigged downstage.
The second video projector has to be rigged at least 5m away from downstage.

LES MURMURES D'ANANKE


Collectif ArpiS


Technical head
Emma Schler
+33624390520
emmasc.technique@gmail.com




Les Murmures d'Ananké
Collectif ArpiS


Technical head
Emma Schler
+33624390520
emmasc.technique@gmail.com


 PAR 16
Provided by the Company

 PC 650W or 1kW


 Simple pulley
Provided by the Company

 Soft goods

 Lanternes
Provided by the Company

 Double pulley
Provided by the Company

 Video support
Provided by the Company

 Scenography and/or video support
Provided by the Company