

Adrien M & Claire B

Mirages & miracles

**Exhibition
Visual Arts
Created in 2017**

Excerpt : The silence of stones + Illusions

Technical rider

Technical contacts

Technical direction
Technical management

Raphaël Guénot
Jean-Marc Lanoë

+33 6 84 60 42 74
+33 6 70 09 65 19

technique@am-cb.net
jean-marc@am-cb.net

During the exhibition

In case of malfunction

maintenance.mm@am-cb.net

Adress and registered office

Adrien M & Claire B
54, quai Saint-Vincent, 69001 Lyon France

+33 4 27 78 63 42

contact@am-cb.net

Summary

P. 3 **1. General concerns**

P. 4 **2. Reception desk**

Artworks :

The silence of stones, a series of experiments in augmented reality where visitors can observe drawings and stones through an iPad :

P. 5 **3. Rain — Trail** 2 * 120 × 120 cm prints on floor plates.

P. 6 **4. Line** Stones and a 120 cm x 60 cm print on a low table.

P. 7 **5. White stone - Two stones - Black stone** 3 * 50 × 65 cm lithographies.

P. 8 **6. Twin stones** Stones and 9 * A3, A4, A5 prints placed on tables.

P. 9 **7. Stones with hair** 14 * A3, A4, A5 prints hanged on boards.

Illusions, three small optical theatres, where visitors can observe an object coming together coincidentally with a reflected image :

P. 10 **8. Respiration — Dilatation — Erosion** Pepper's ghost with blown glass and stones.

Ghost machine, experience with virtual-reality headset :

P. 11 **9. Murmuration** Visitors sit in front of a luminous blown-glass artwork. Duration: 2 min 30.

Mysteries, immersive experience in an projected image environment :

P. 12 **10. Tempo geologico** Video projection on metal veil.

1. General concerns

This technical rider is part of the contract, any changes have to be approved by the company.

1.1 EXHIBITION SPACE

The minimum surface area for this series of artworks is around 120m².

It can be presented in an exhibition space with natural light but in which artificial light must be installed.

1.2 PRE SET UP

In order to prepare the set up of the exhibition, the presenter has to provide and pre-install :

- Arrangements (additional walls, cleaned walls, empty space...)
- Rigging points for the hanging artworks.
- Power supplies, cables and cable covers required.
- Spotlights with Lee Filters #201 and #202.
- A stepladder.

Every requirements and details are in the technical description of each artwork. A specific layout of the exhibition will be provided.

1.3 LOGISTICS

Our equipment is packaged in flightcases that fit in a 16m³ utility vehicle. Thanks for providing a secure parking area and a place to unload / load near the exhibition space.

We leave all the empty flightcases on site. A storage space of 10m² is required.

1.4 TECHNICAL STAFF AND PLANNING

Our technical set-up team consists of 2 technicians.

The set-up time, including unloading and focusing, is 3 days (six 4-hour shifts).

The take-down requires 1 day (two 4-hour shifts), with 2 technicians of our team.

1.5 STAFF TO PROVIDE

For the unloading / loading and the set up / take down 2 people are required in addition to the company crew. During the set up and the take down, 1 technical manager of the venue must be present full time.

1.6 EXHIBITION SECURITY

The installation is fragile. To ensure its proper use, continuous surveillance in the exhibition space is necessary. To provide an additional security, the presenter will organize

a counting system at the entrance to respect the capacity to 40 visitors simultaneously.

1.7 MAINTENANCE

To ensure the proper functioning of the exhibition, all technicians who may start and stop the exhibition will have to follow a one-hour training session that we will deliver at the end of the set-up. A manual will be provided to complement this training.

A daily maintenance will have to be carried out by the presenter : checking of the good functioning, restarting in case of simple bugs, replacement of the stones and cleaning of the surfaces.

Replacement equipment will be left at your disposal in case of damage.

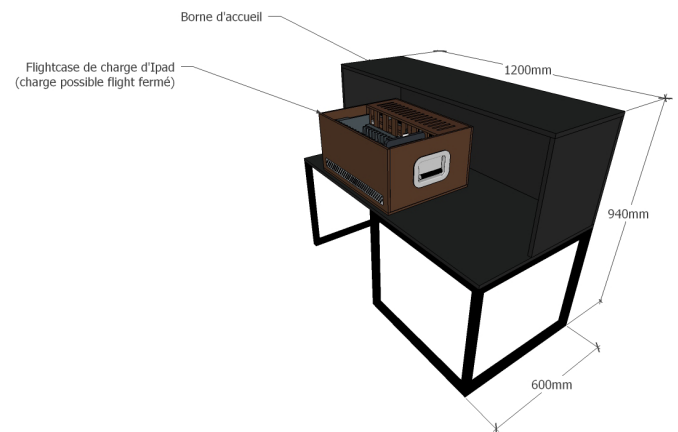
In case of persistent technical dysfunctions, the presenter should contact us (maintenance.mm@am-cb.net) for a remote maintenance.

1.8 NETWORK

In order to facilitate remote maintenance, our installation must be connected to a non-secured wired Internet connection (we provide the router). This allows us to take control of the installation remotely and to better diagnose potential dysfunctions.

We use Teamviewer software to connect remotely.

2. Reception desk



2.1 DESCRIPTION

Furniture where mediators welcome visitors at the augmented reality entrance.

Here, visitors can borrow an iPad in exchange for an ID.

The flightcase stays on the desk at all times, it can be closed and locked whilst charging.

CAUTION : When iPads aren't in use for several days, battery must be charged at 60% (a flat or a full battery may damage the device and reduce its lifespan).

2.2 DETAILS

- 1 reception desk.
- 15 iPads pro 9,7" with protective case.
- 1 iPad to turn on and off the exhibition.

2.3 TECHNICAL NEEDS

A power supply (with plug adaptor if necessary).

Cables, power strip and cable covers.

A spotlight.

3. Rain — Trail



3.1 DESCRIPTION

Two augmented reality artworks.
Prints glued on wooden boards placed on the floor.

3.2 DETAILS

- 2 wooden boards 120cm x 120cm x 3cm with 4 height-adjustable feet.

3.3 TECHNICAL NEEDS

A spotlight per artwork.

4. Line



4.1 DESCRIPTION

One augmented reality artwork.
One print glued on a wooden board fixed to trestles. A line of stones.

4.2 DETAILS

- 1 wooden board 120cm x 60cm x 3cm.
- 2 trestles, height 50cm.
- 17 (set n°1) or 18 (set n°2) stones.

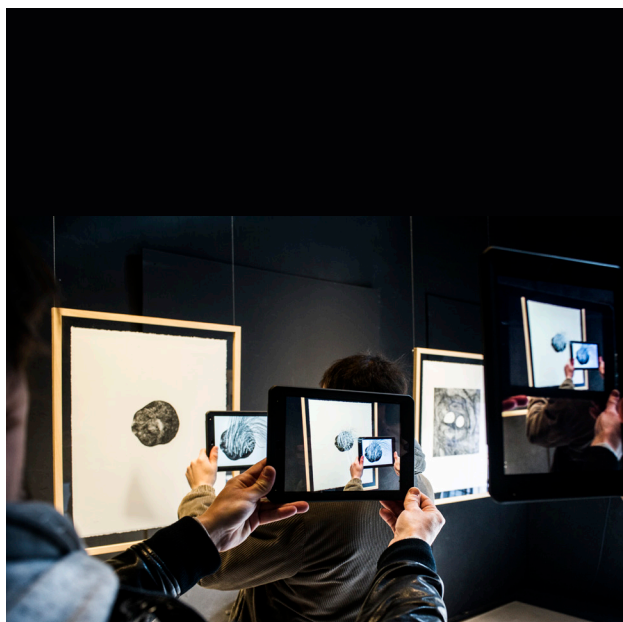
4.3 TECHNICAL NEEDS

A spotlight.

5. White stone

— Two stones

— Black stone



5.1 DESCRIPTION

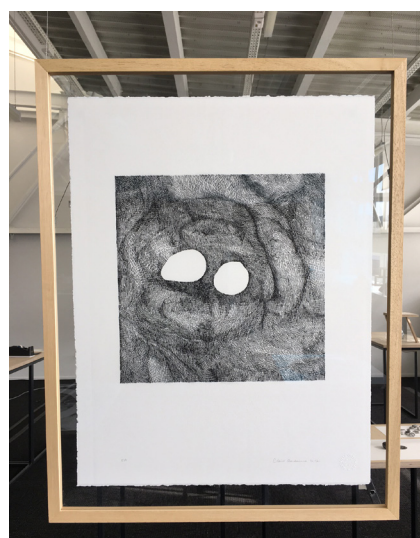
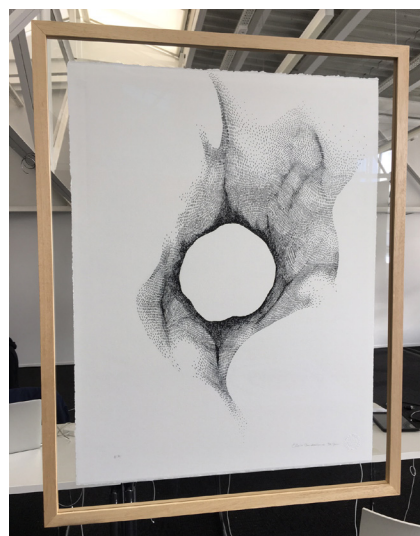
Three augmented reality artworks.
Three framed lithographies suspended.

5.2 DETAILS

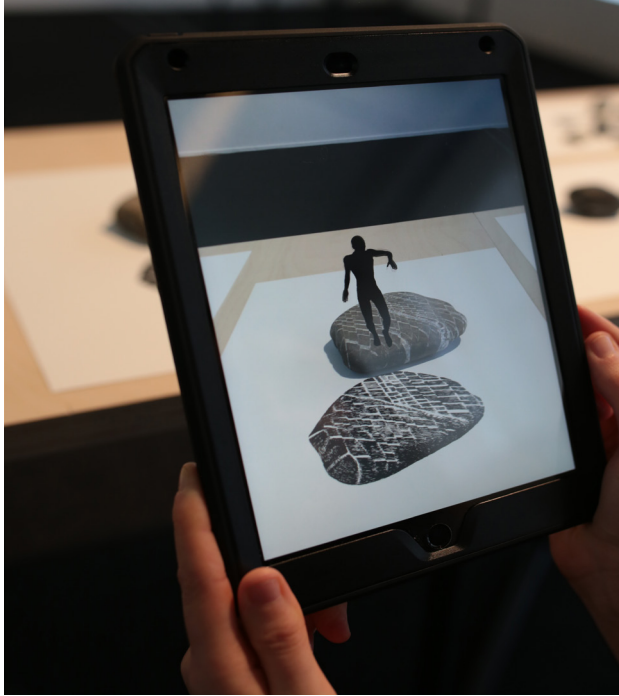
- 3 framed lithographies 60cm x 78cm x 3cm.
- 6 rigging systems (2 per artwork, weight of each frame : 4kg).

5.3 TECHNICAL NEEDS

Two rigging points per artwork. 58,5cm between the points and 20cm from the wall. We provide, if needed, white brackets to be fixed to the walls.
A spotlight per frame.



6. Twin stones



6.1 DESCRIPTION

Series of augmented reality artworks.
Drawings and stones placed on three wooden boards fixed on trestles.

6.2 DETAILS

- 3 wooden boards 60cm x 120cm x 3cm.
- 4 trestles, height 70cm.
- 9 drawings on paper (A5, A4 and A3 format).
- 21 (set n°1) or 18 (set n°2) stones.

6.3 TECHNICAL NEEDS

Three spotlights.

7. Stones with hair



7.1 DESCRIPTION

Series of augmented reality artworks (can be split in three parts).

Drawings on paper fixed on suspended wooden boards.

7.2 DETAILS

- 3 wooden boards 60cm x 120cm x 3cm.
- 6 rigging systems (2 per board, weight of each board : 14kg).

7.3 TECHNICAL NEEDS

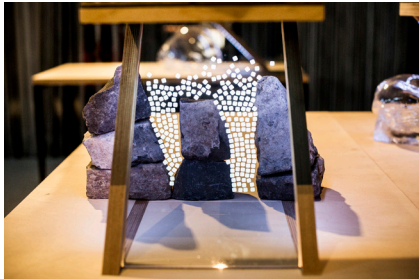
Two rigging points per artwork. 110cm between the points and 20cm from the wall. We provide, if needed, white brackets to be fixed to the walls. A spotlight per frame.



8. Respiration

— Dilatation

— Erosion



8.1 DESCRIPTION

Three optical theatres.
Holographic illusion created by the reflection of an iPad on various objects, through a sheet of glass placed at a 45° angle.

8.2 DETAILS

- 3 wooden boards 60cm x 120cm x 3cm.
- 6 trestles, height 100cm.
- 3 optical illusion systems nested on wooden boards (LED strip, glass plate, iPad).
- 2 blown-glasses.
- 7 stones.

8.3 TECHNICAL NEEDS

Two power supplies (with voltage converter and plug adaptor if necessary).
Cables, power strip and cable covers.

9. Murmuration



9.1 DESCRIPTION

Virtual reality artwork.

The visitor sits on a bench, gets equipped with a virtual reality headset and participates in an immersive experience (duration 2min30s).

An suspended aluminium cloud is the support for a video projection.

9.2 DETAILS

- 1 furniture containing all technical equipment.
- 1 bench.
- 1 computer with monitor, keyboard and mouse.
- 1 headset Oculus Rift with accessories.
- 1 video projector.
- 1 light tile 60cm x 60cm.
- 1 blown-glass artwork.
- 1 aluminium grid shaped like a cloud.

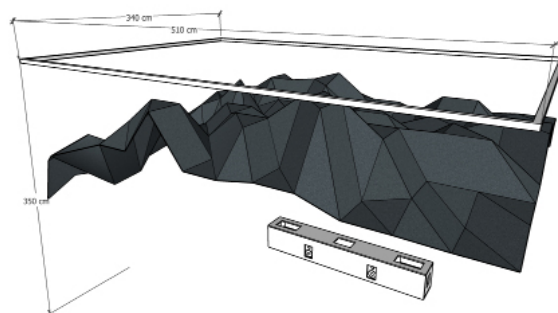
9.3 TECHNICAL NEEDS

A power supply (with plug adaptor if necessary).

Cables, power strip, RJ45 cable and cable covers.

Rigging point for the cloud (a weight of 200g).

10. Tempo geologico



10.1 DESCRIPTION

Immersive and interactive audiovisual artwork.
Visitors move under an aluminum veil, on which moving particles are projected.
Cameras make the particles interactive.

10.2 DETAILS

- 1 aluminium structure.
- 1 aluminium veil.
- 1 furniture containing all IT hardware, videoprojectors and speakers.

10.3 TECHNICAL NEEDS

A black carpet on the floor.
A power supply for the furniture (with plug adaptor if necessary).
A power supply for the infrared projector (with plug adaptor if necessary).
Cables, power strip, RJ45 cable and cable covers.
Four hanging points for the frame (a total weight of 20Kg, 5Kg per point).