



Chrysalis

Dream 2074

<https://vimeo.com/968995284>

Technical sheet

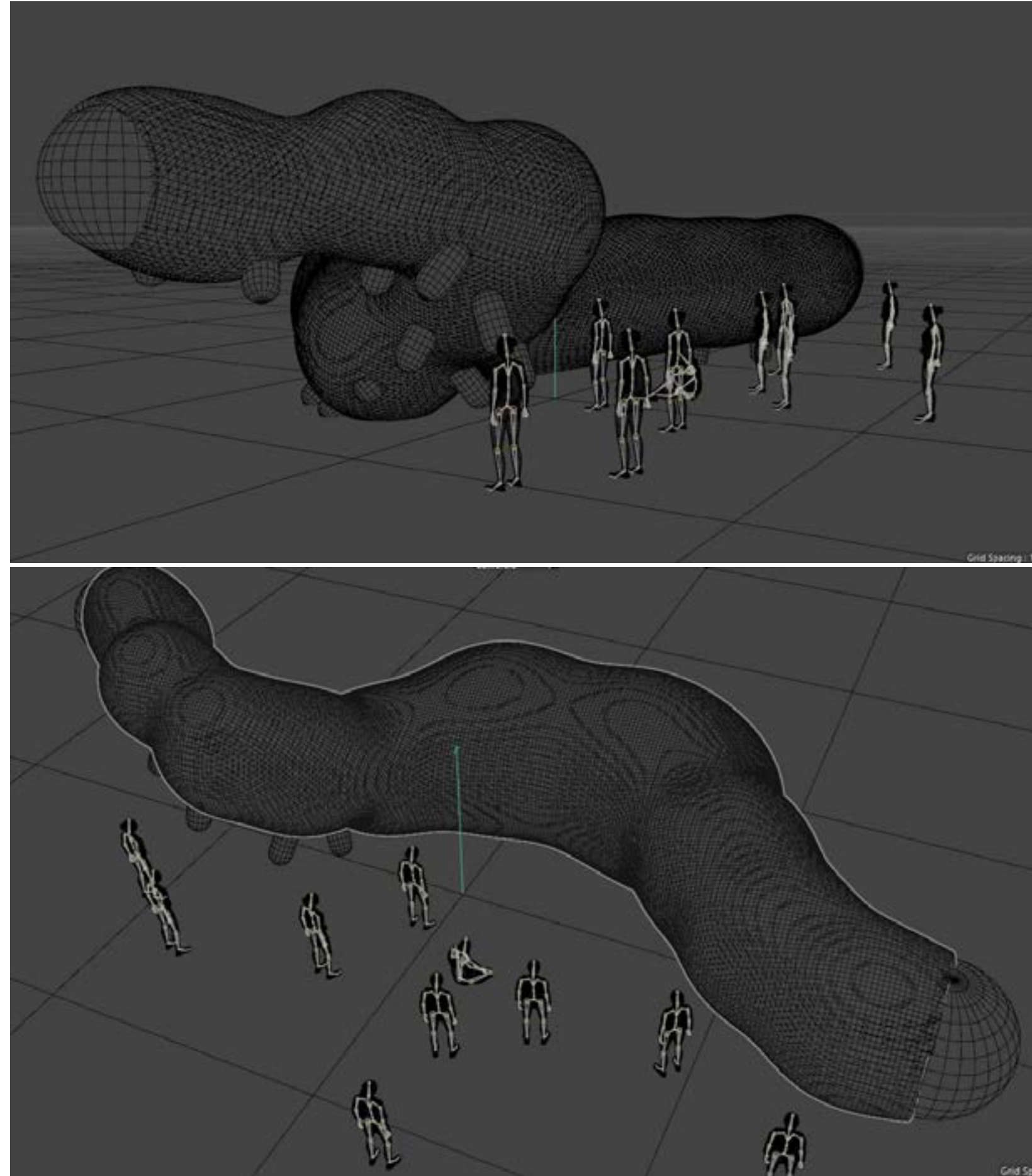
Artiste :

1 inflatable 16m long by 2.70m in circumference
3 fans
1 computer
1 video projector
1 pair of speakers
2 Philips LED strips
1 Philips HUE box
1 video synchronizer / LED strip
2 multi-socket
1 protective cover
6 straps
Recycled white synthetic turf
1 video (45 mins)

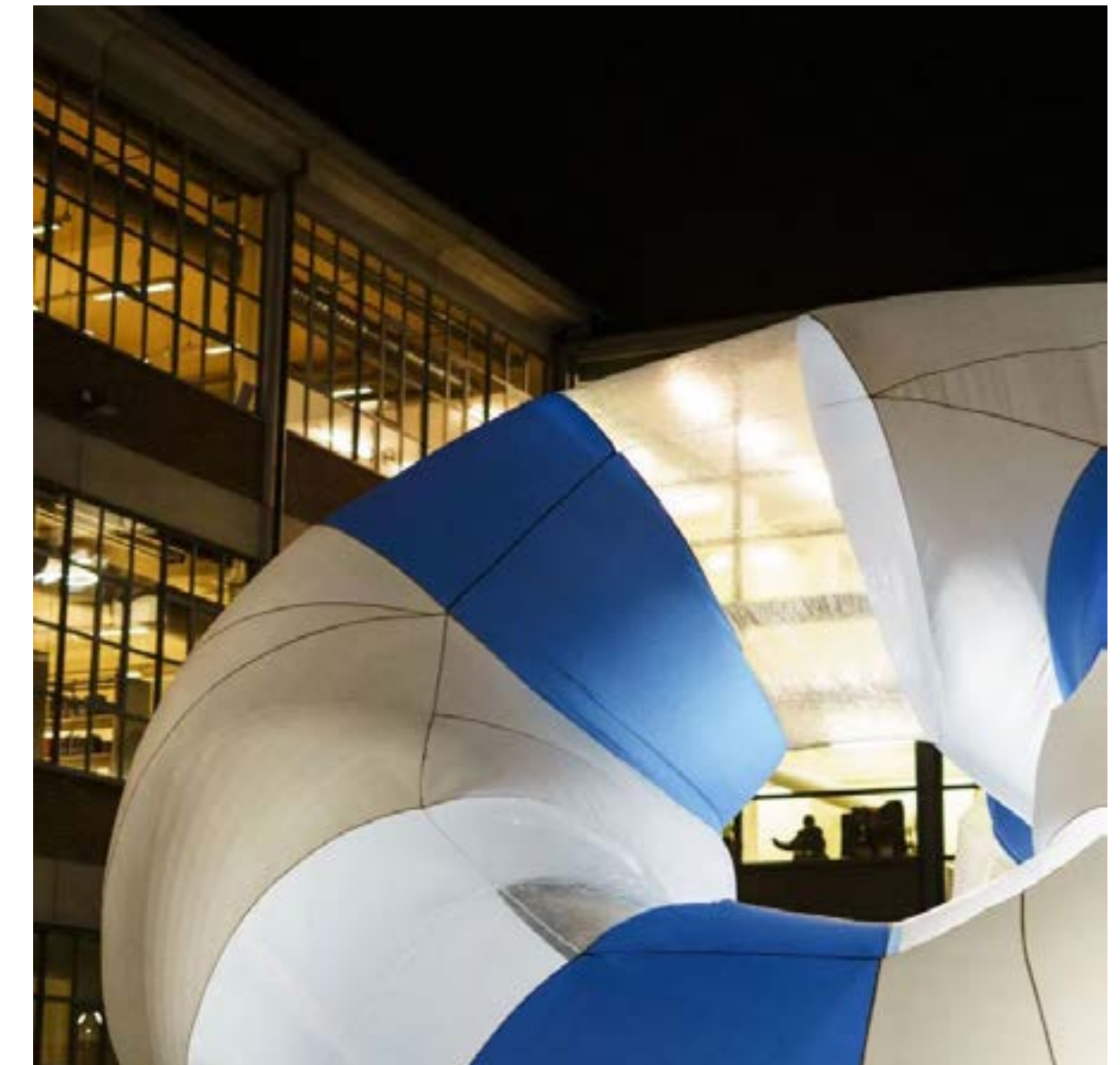
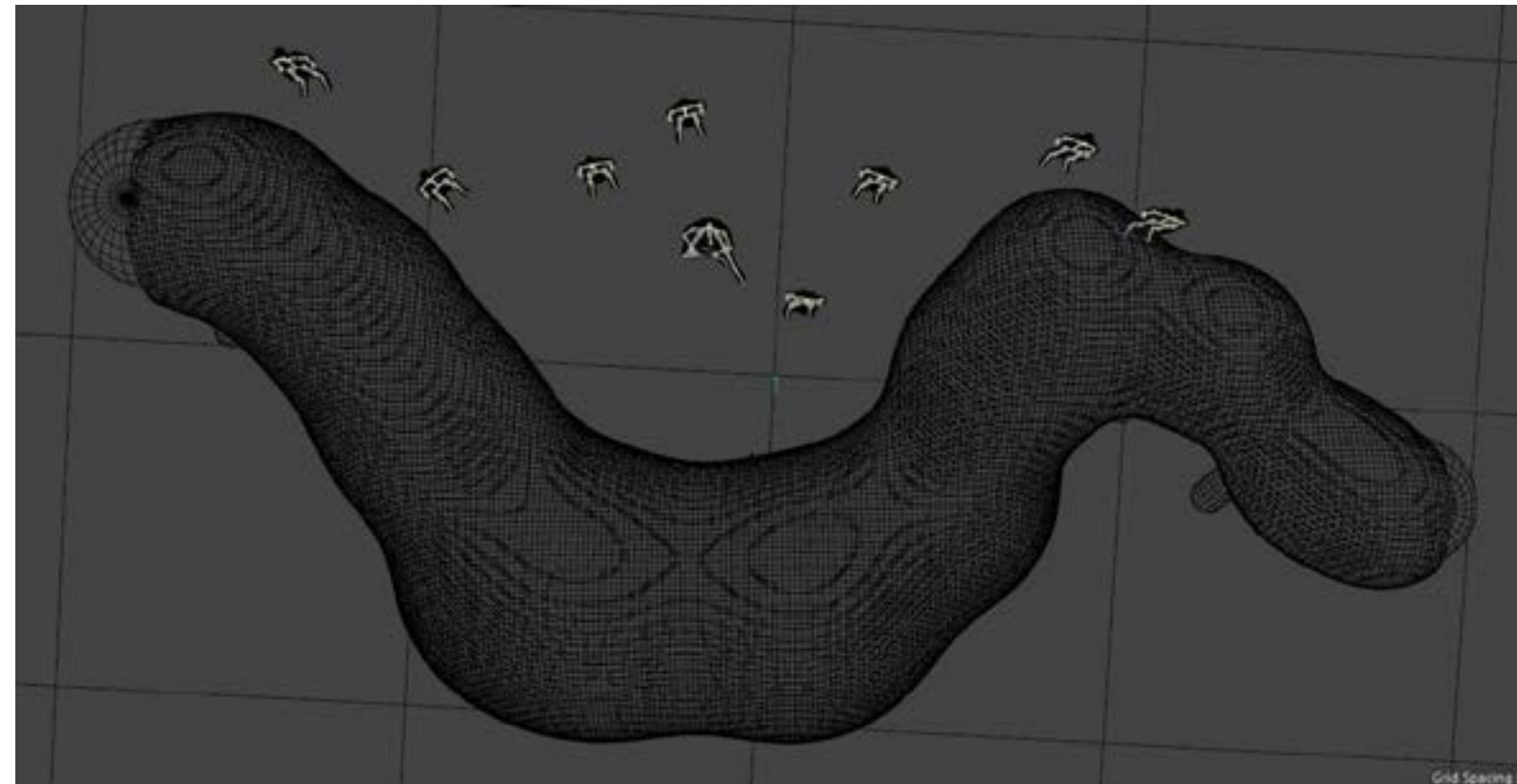
Festival:

Internet connection
Electric current access

Prévisualisation

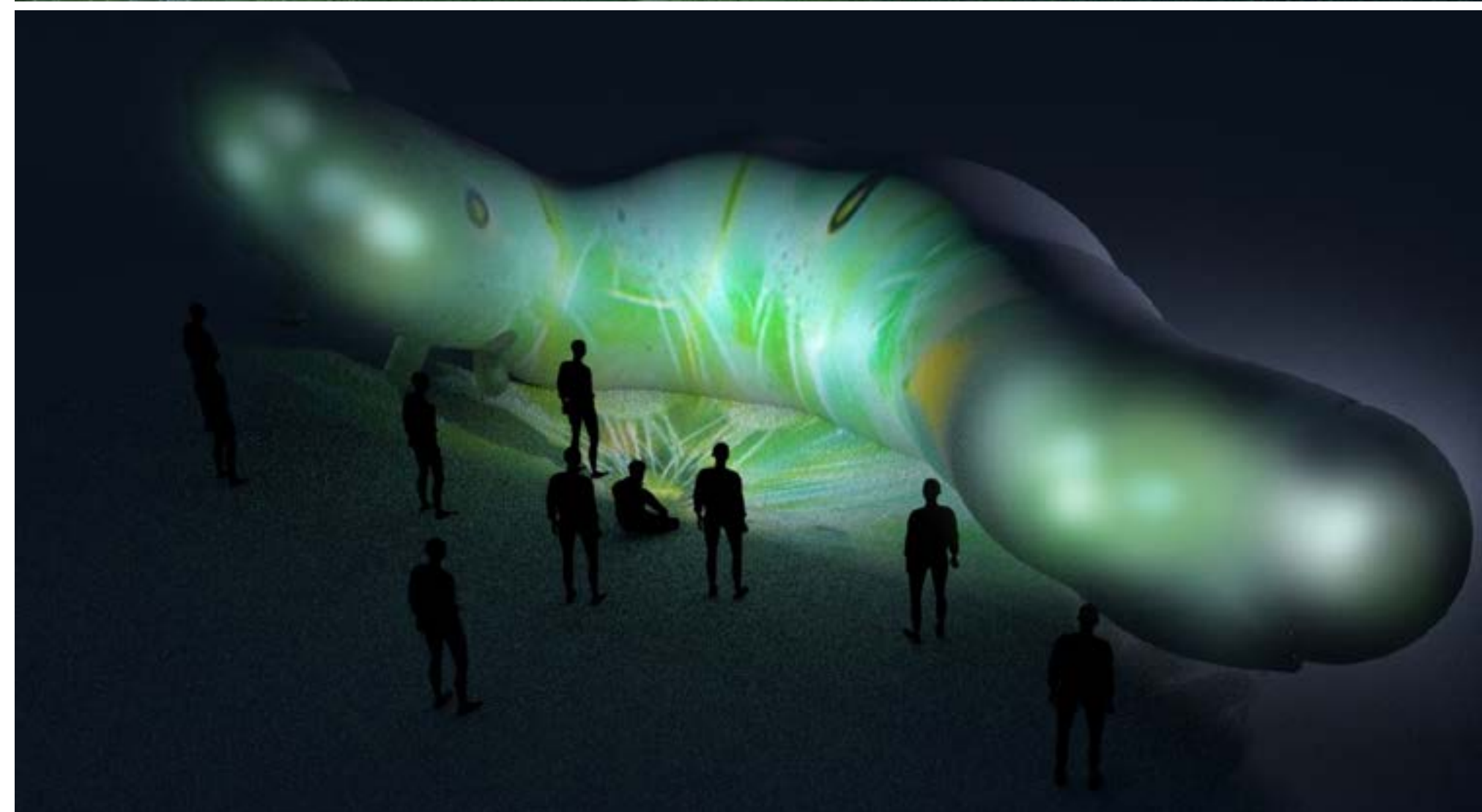


Here a front view as well as a top view, to show the spatial layout of the work, allowing the public to move easily



Example of the material used to create the inflatable caterpillar. It will be a solid color; white with visible contours to demarcate the different parts of the body.

Prévisualisation



Mise en situation de l'exposition avec le vidéo projecteur, la sculpture gonflable et le public

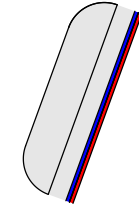
Prévisualisation

CHRYSALIDE
«REVER 2074»

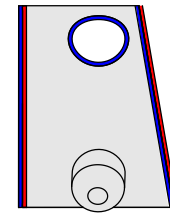
C2 x 1



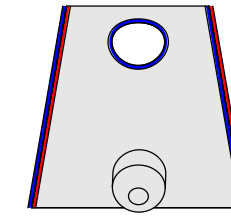
C1 x 2



D x 2



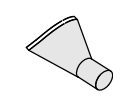
E x 3
E' x 1



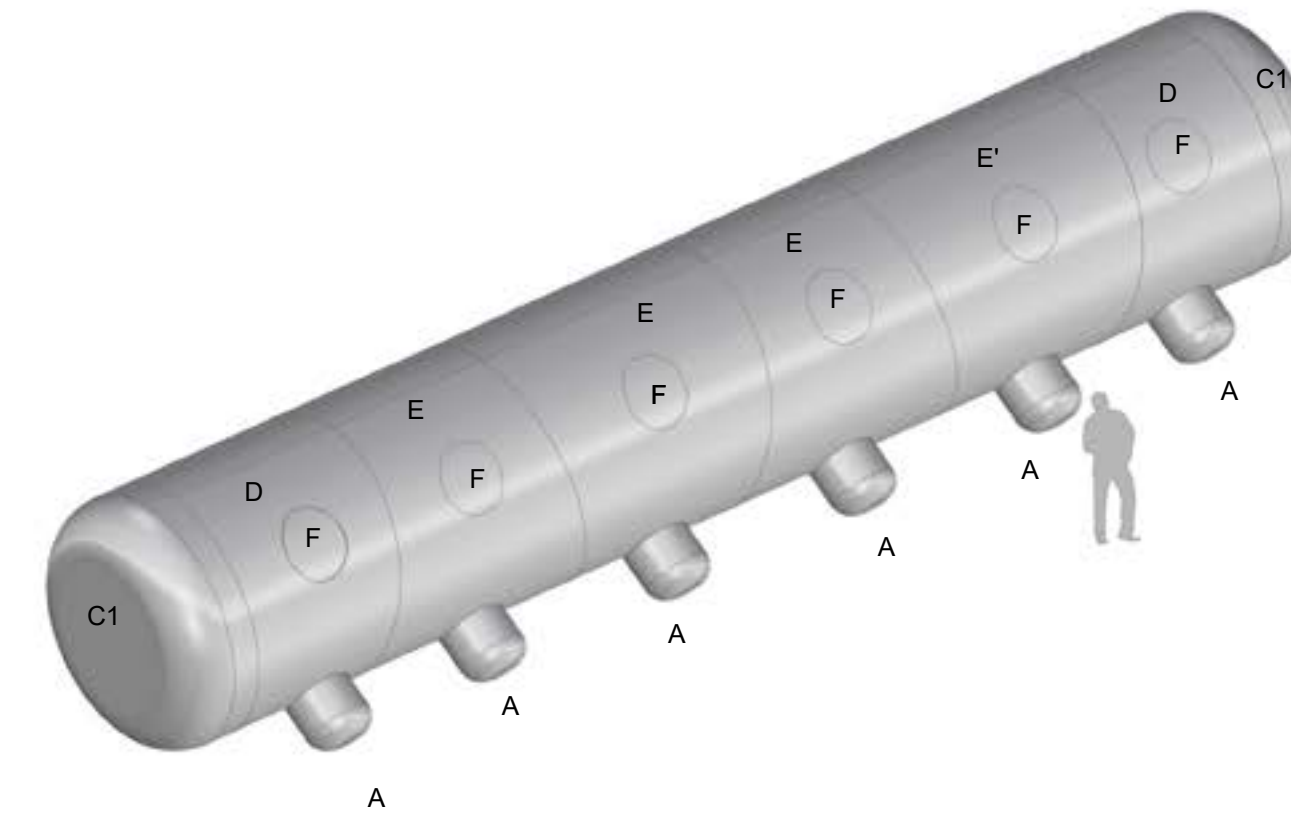
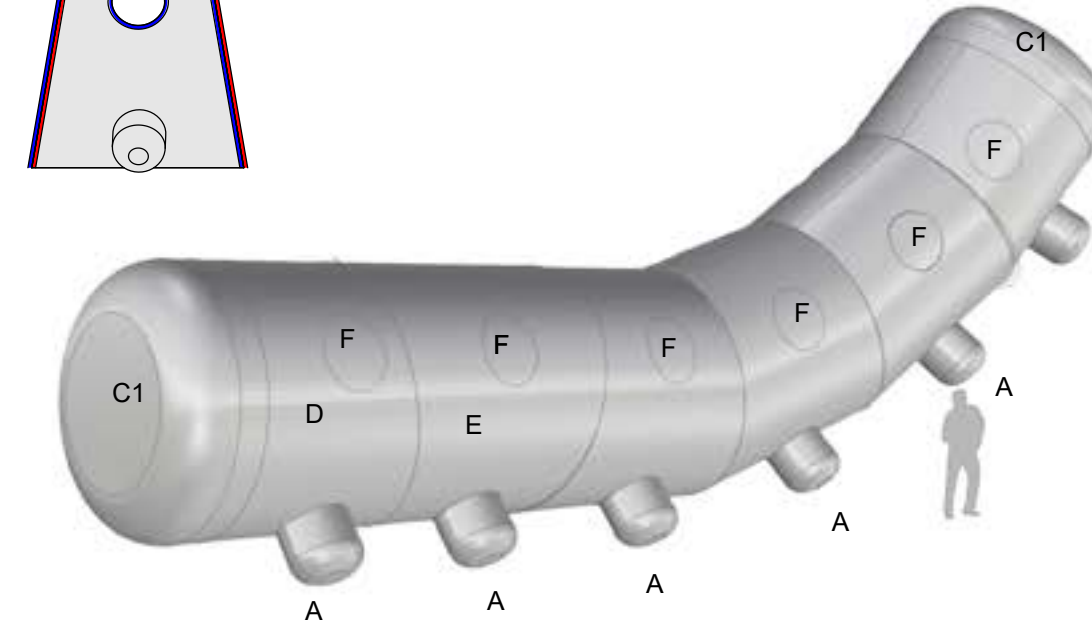
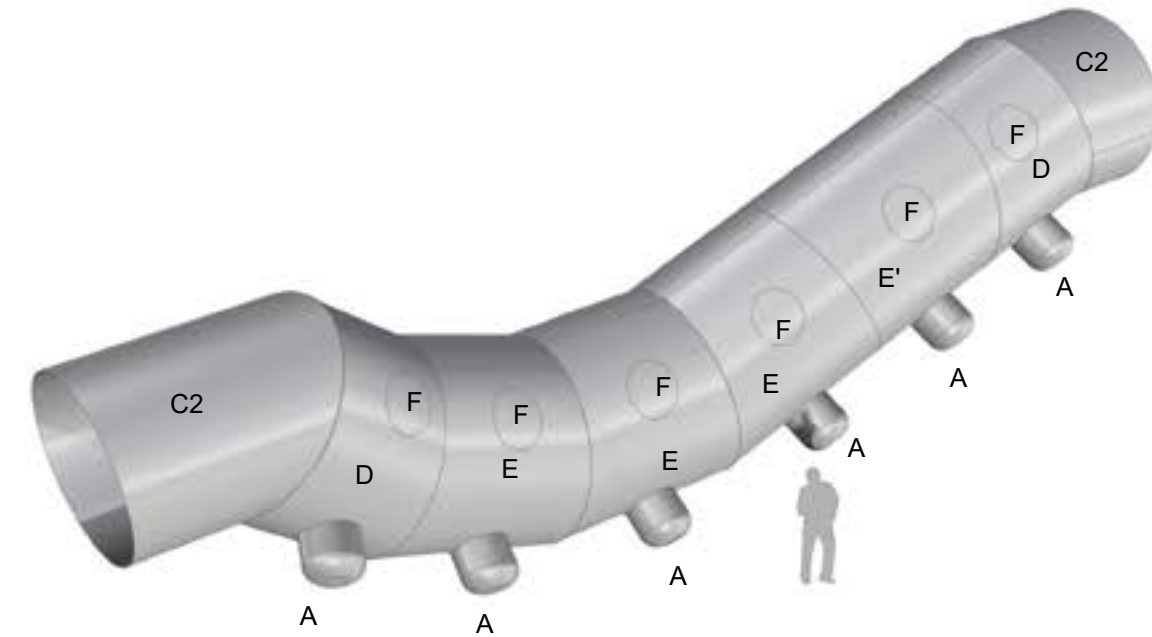
A x 12



B x 1



F x 12



MARTIAL
MARQUET
STUDIO

JURA

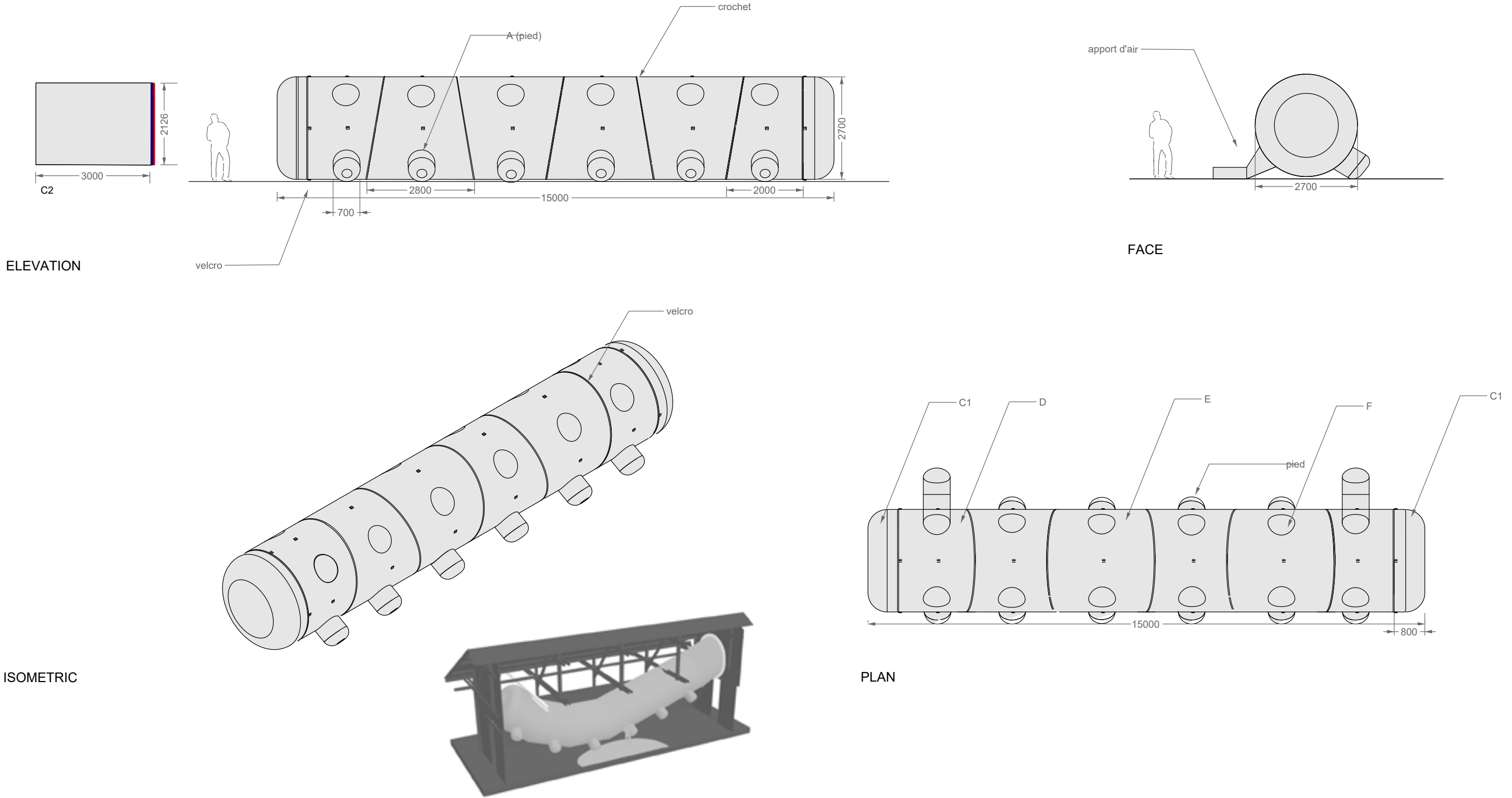
TECHNICAL DRAWINGS
PHASE DCE
20240311



FORMAT / ÉCHELLE : A3, 1/100

Technical drawing of the caterpillar, which will be an assembly of three different modules for a total length of 15 m long with a circumference of 2.70 m. We can thus guarantee or reduce the size of the inflatable sculpture. Also its design allows it to be given different shapes and thus adapt to different exhibition venues.

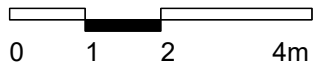
DESSIN TECHNIQUE DE LA STRUCTURE GONFLABLE



MARTIAL
MARQUET
STUDIO

JURA

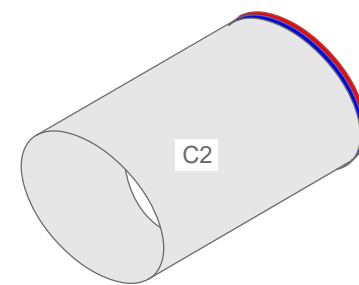
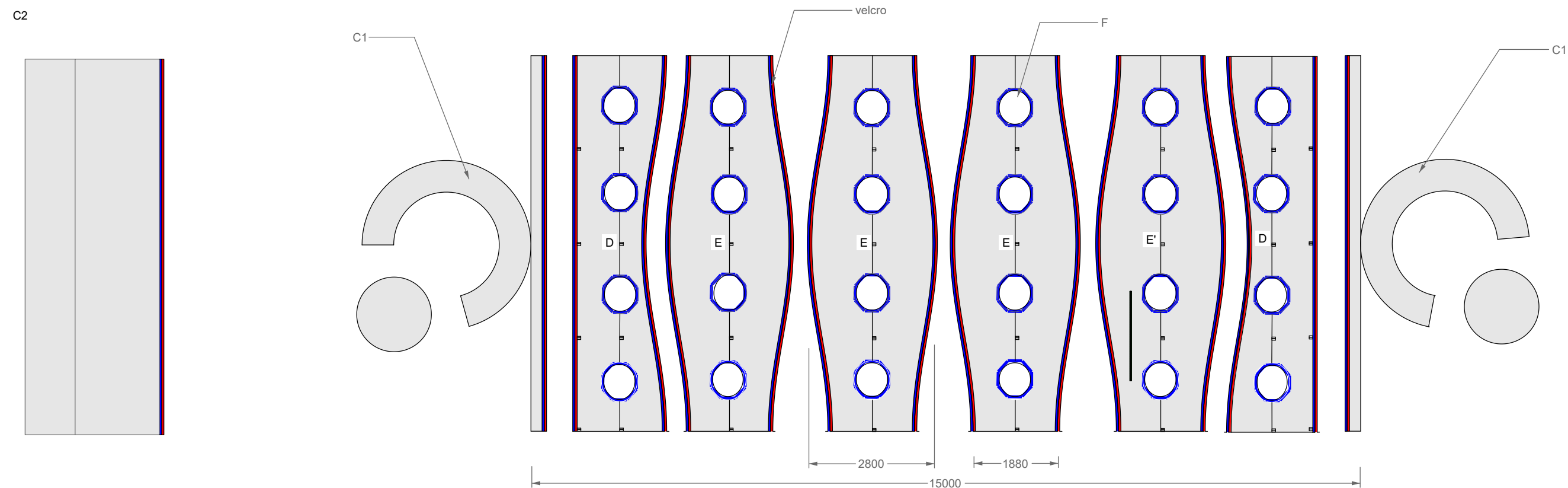
TECHNICAL DRAWINGS
PHASE DCE
MARS2024



FORMAT / ÉCHELLE : A3, 1/100

For the Moutier exhibition, we opted for the sculpture to be suspended from its head and tail, so that spectators could pass over the sculpture and give the impression that the caterpillar is larger than the room where she is exposed.

DESSIN DÉROULÉ ET MESSURES

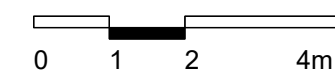


	C	D	E	F	A	B	sum	
textile polyester étanche(m2)		50,6	26,3	71,8	4,8	14,4	6,8	174,7
velcro (ml)		8,4	16,8	33,6	30,0	25,0	5,0	118,8
couture (ml)		118,0	103,0	197,0				418,0
anneaux (pc)		4,0	8,0	16,0				28,0
fermeture éclair(ml)				2				2
TOTAL	C1x2/C2x2	x2	x4	x12	x10	x2		

MARTIAL
MARQUET
STUDIO

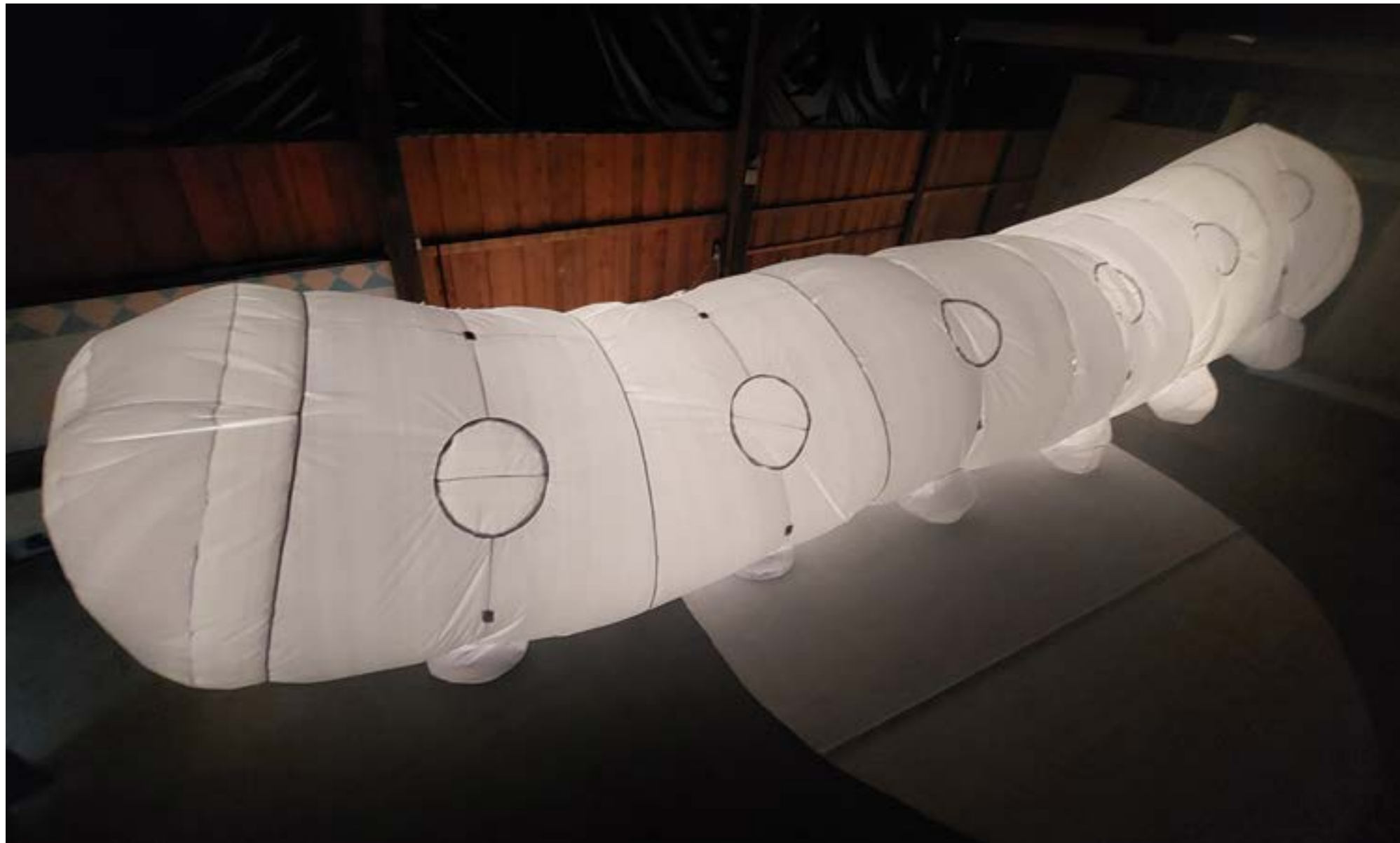
JURA

TECHNICAL DRAWINGS
PHASE DCE
20240311



FORMAT / ÉCHELLE : A3, 1/100

We designed a hook and loop system to attach the track legs to the rest of the body. Depending on how the caterpillar will be arranged, we will place the legs in view of the public for a better understanding of the work.



Merci

arnaud.laffond@gmail.com