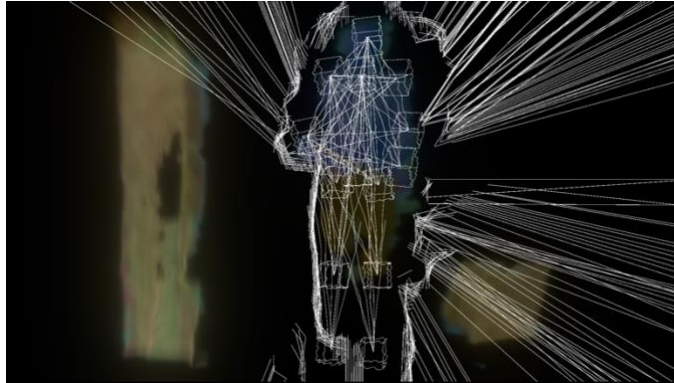


## TECHNICAL SHEET F\_AI\_L - K. DANSE

- 2 powerful projectors (minimum 4000 lumens, short throw) (with long HDMI cable), directed towards a light-colored wall or screen, with base on the ground.
- 2 or 3 light projectors, on stands, controllable via PC or manual dimmer.
- Stereo sound system adapted to the room (ideally with a subwoofer).
- Electricity, extension cords, multiple sockets.
- Table and chair.
- Cable management.



### **Contacts:**

Artistic

Jean-Marc Matos

[kdmatos@orange.fr](mailto:kdmatos@orange.fr)

+33(0)611775456

### **Technik:**

Video, digital equipment > Clément Barbisan

[barbisan.clement.isart@gmail.com](mailto:barbisan.clement.isart@gmail.com)

+33(0)669565598