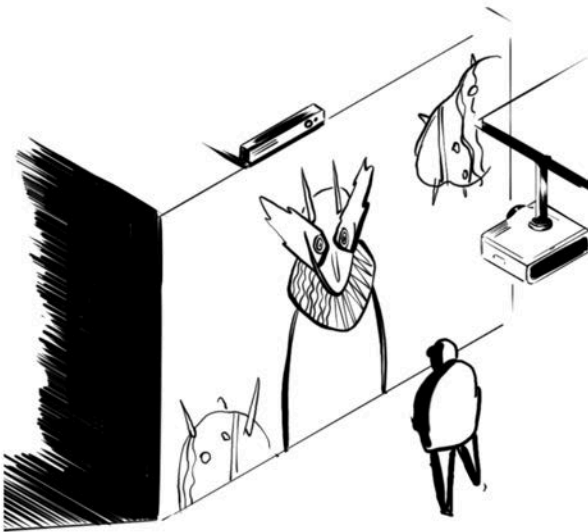


2/ Technical information

INTERACTIVE PROJECTION: TWO EDITING SYSTEMS



1/ the fixed version

An interactive installation can be set up using a video projector.

Technical requirements:

- A computer on site
- A screen or video projector
- Speakers
- A button or distance sensor

Here, the computer opens a programme to launch the interaction. A second projector showing floating scenery in linear video can be added to the experience.

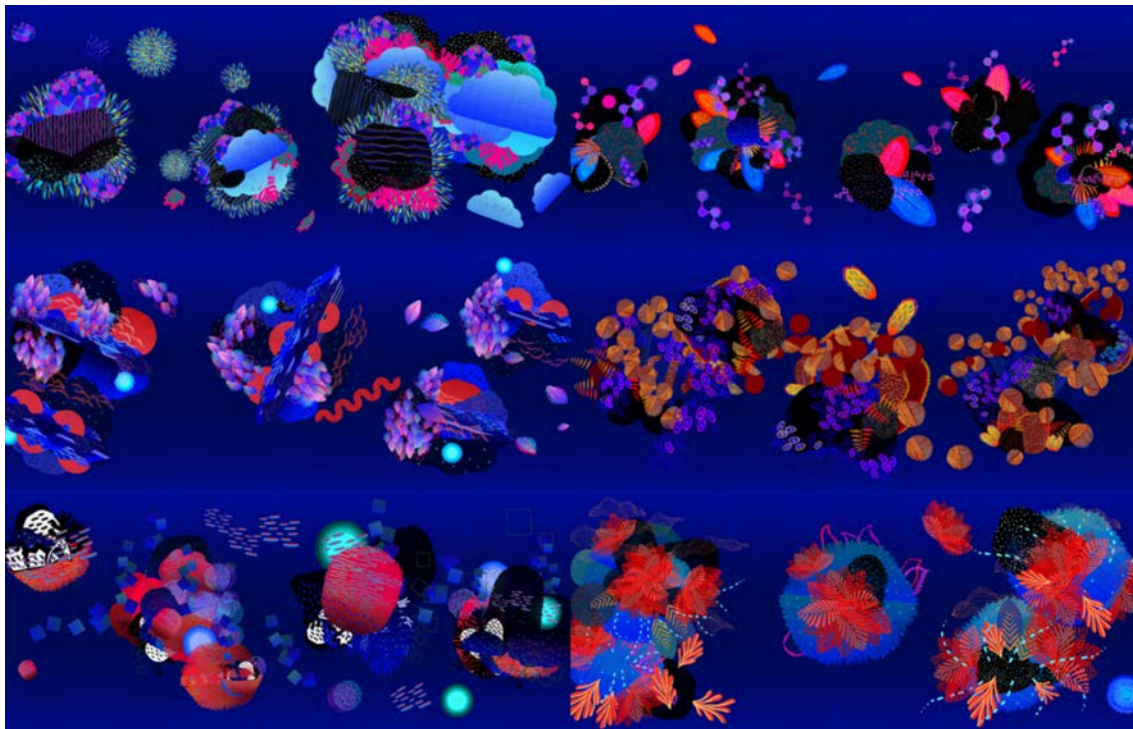
2/ the immersive version

The second version consists of a mapping made up of 2 to 6 video projectors and requires a residency of 2 to 3 days prior to the event in order to prepare the mapping on site.

Technical requirements:

- Video projectors and ceiling and side hangers: (e.g. Sony VPL-FZ 65, 6000 lumens to BENQ MW665, 3200 lumens)
- Speakers and console
- HDMI cables
- Kinect (we can bring our own)

Notes: We will bring our own computer and the Touch Designer project.



THE AUGMENTED REALITY EXPERIENCE

Eight eyes in three different sizes can be used to **personalize objects, posters, floors and walls in each space.**

These eyes, linked to different personalities and stories, invite the viewer to play a game that, like a book in which you are the hero, gives access to each of the guides.

Some are hidden, others can be seen, and still others want to talk. The audience is invited to discover each spirit, its fears, its desires and its history. Once tamed, they will **guide the audience throughout their lives.**



(the idea is to print a multitude of eyes)



(and stick them on the objects)

A short video of an animated eye:
<https://we.tl/t-62mhVNJpWV>

OTHER POSSIBILITIES: THE LENTICULAR and AR FILTERS

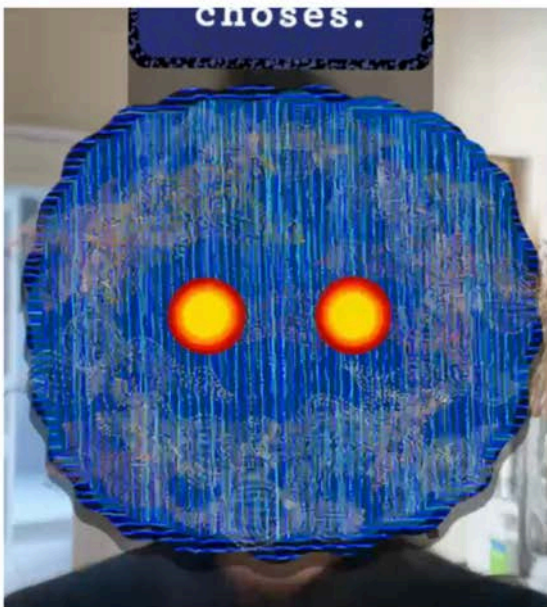
Panels and other lenticular elements:



Here's the A4 explanation: <https://we.tl/t-WDc45Qm0SL>

AR filters are in progress:

Cinq filtres AR réalisés sous Sparck vont être mis en place



Premier test: Une série de têtes s'enchaînent et délivrent un message sur le tap.



Second test: Une série de deux possibilités s'enchaînent, interrogeant la personnalité du spectateur.



Here's the A4 explanation: <https://we.tl/t-OBfjUI4tmR>