 O Z EXPERIENCE  
by BackLight

**KOEZIO**  
PRODUCTIONS /  Back  
Light



**ICECUBE**

**PROTOCOL**

**THE COOLEST VR  
ATTRACTION IN THE GALAXY**





*"A true moment of FUN in decors worthy of the best animated films."*



## The coolest VR mission in the galaxy

Icecube Protocol is an immersive adventure halfway between a movie, a video game & an attraction, played in teams and in a colorful and fun virtual reality universe.

Cooperation and team spirit are at the heart of the mission's intrigue where participants embody special agents whose mission is to solve the mystery of the sudden disappearance of all ice on Earth. Icebergs, ice cubes, ice cream... everything vanishes. Clue after clue, they are immersed in a virtual journey full of humor, sensations and totally unique of its kind.

## Free-roaming, haptics & VR equipment

Participants are equipped with a virtual reality headset, two controllers to interact and grasp objects, and a backpack. In teams of 2 to 5 people, and thanks to their full body avatars, they embody agents with evocative names and are totally free to move. They can see each other, touch each other, talk to each other and perform collective actions in real time.

The 828 sqf space in which they evolve includes: floor vibrations, heat sensations and fans to make the immersion even greater in the 9 stages of their adventure.

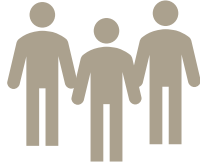


# ICECUBE PROTOCOL

AN ENTERTAINMENT ADVENTURE  
FOR EVERYONE



2-5 players  
per team



Up to 20 players  
per hour



35 minutes  
long



Watch the video trailer



Action



Move



Reflexion



Cooperation



# ICECUBE PROTOCOL

AN ADVENTURE WITH  
HIGH RENDERING DESIGNS



# ICECUBE PROTOCOL

A SPY MISSION  
FULL OF HUMOR

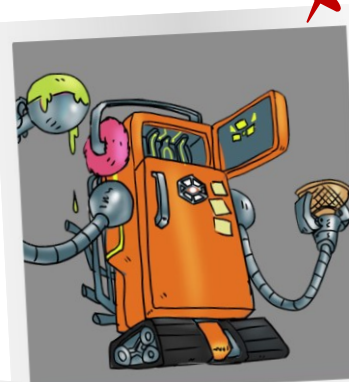


[15.11.2019 / SCREENSHOT IN GAME]

People can interact with each other but also have several landscapes to contemplate but the story is also rythmed by humor. The sense of humor helps the immersion of everyone

"Skycold" / Opening

▶ LISTEN



SUSPECT #1

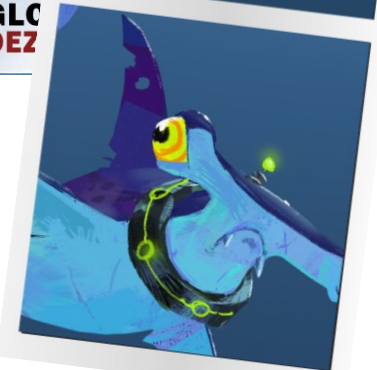
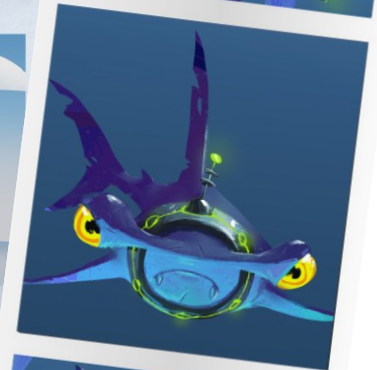
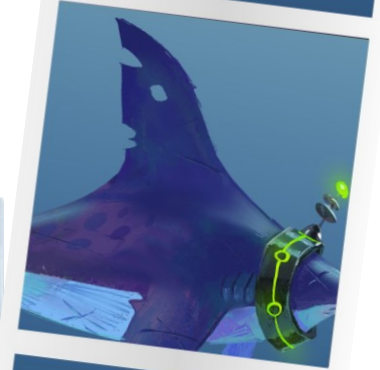


MALICIOUS D

MISSING  
MISSING  
AVEZ-VOUS VU CET  
IGLOO ?

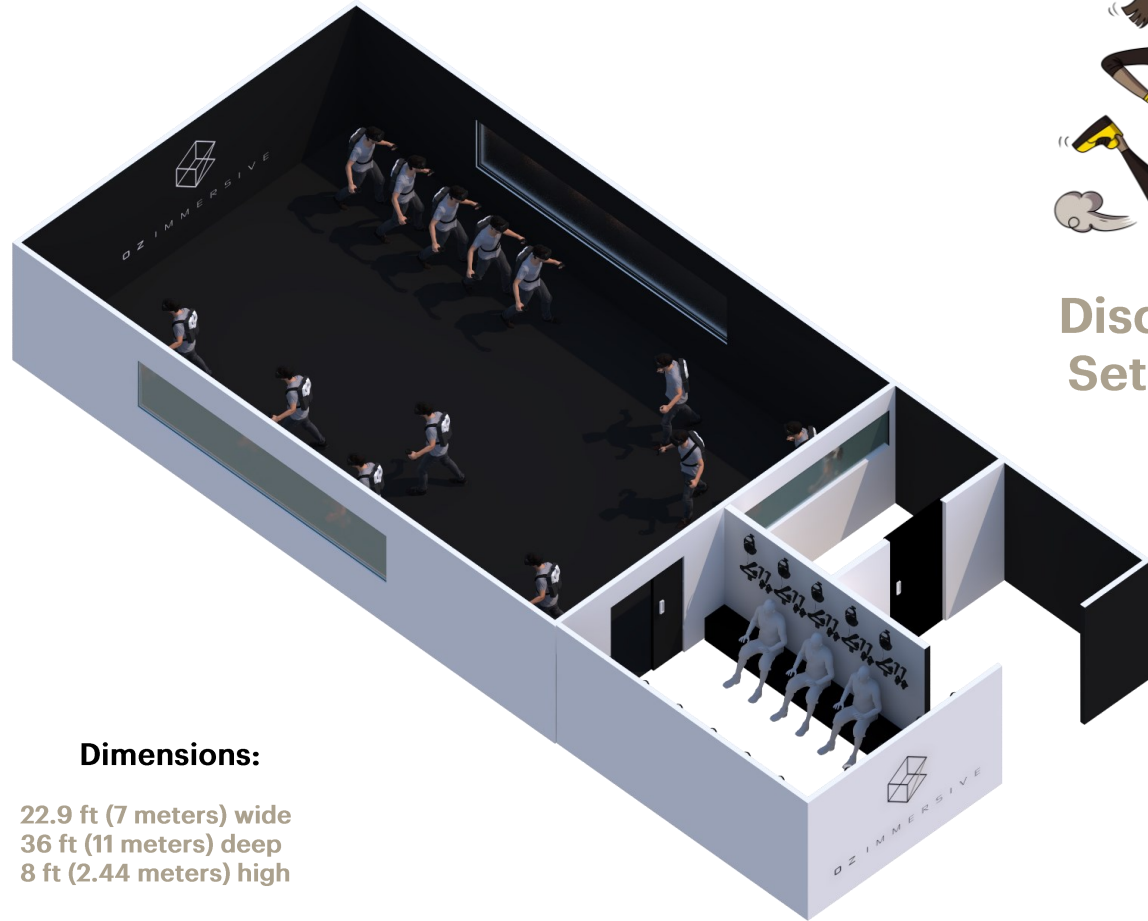


DISPARITION D'UN IGLOO  
Contacter l'AGENCE KOEZ



# ICECUBE PROTOCOL

DEDICATED INSTALLATION  
WITH ENVIRONMENT EFFECTS



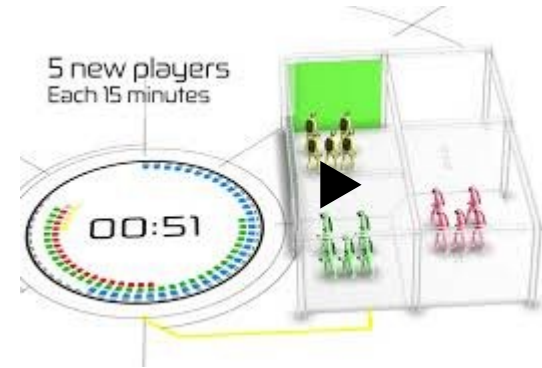
## Dimensions:

22.9 ft (7 meters) wide  
36 ft (11 meters) deep  
8 ft (2.44 meters) high



Discover the  
Setup there

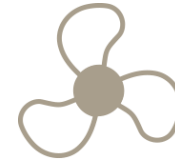
High throughput : up to 20 players per hour



Haptics / EFX (Environment effects)



Vibrating  
floors



Fans



Heat





CONTACT US AT [ICECUBE@OZ-XP.CO](mailto:ICECUBE@OZ-XP.CO)



**ICECUBE**  
PROTOCOL



Co-produced by

**KOEZIO** & **BackLight**

