

Tech Rider



Performer : Gamgie
Performance Title: OXIPITAL
Version: 2024.08_01

1. Overview

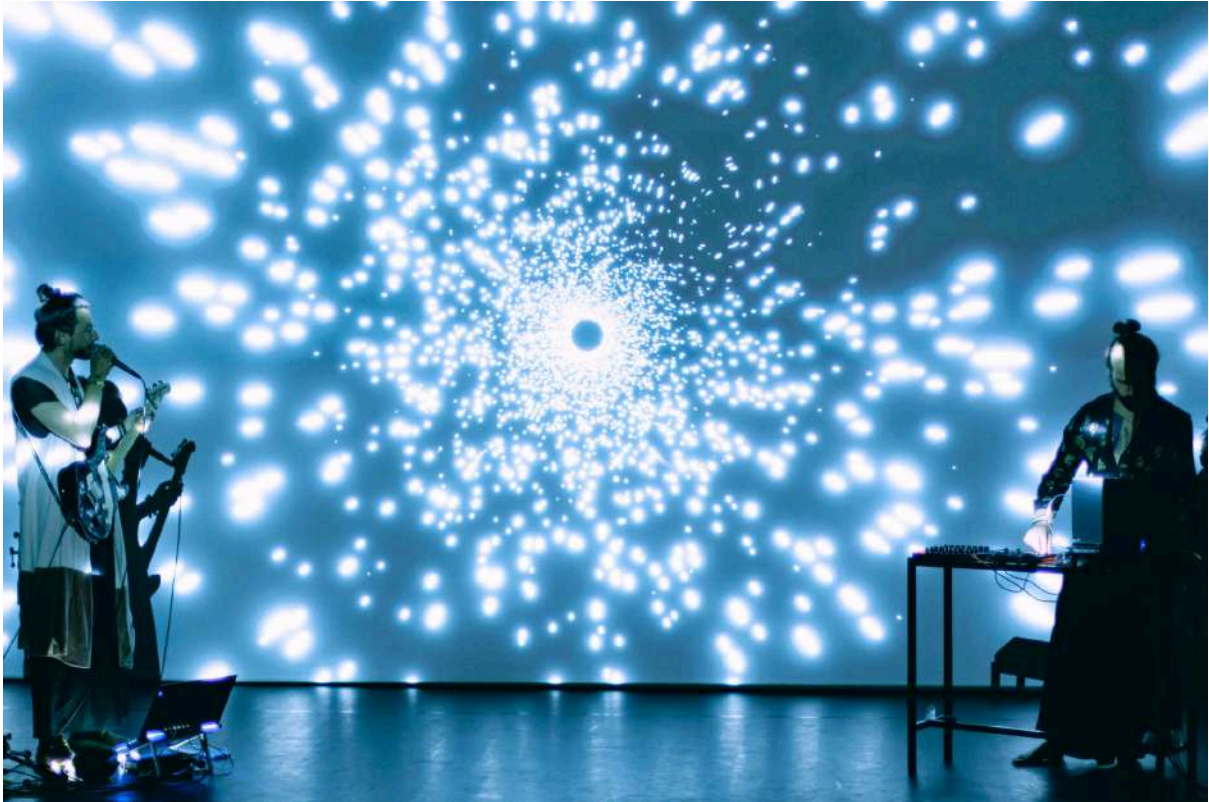
Description:

Oxipital is a live visual performance that blends art and science, utilizing physics-based particle systems to create dynamic visuals. This tech rider outlines the necessary requirements for the successful execution of the Oxipital performance.

Diet: 1 vegetarian

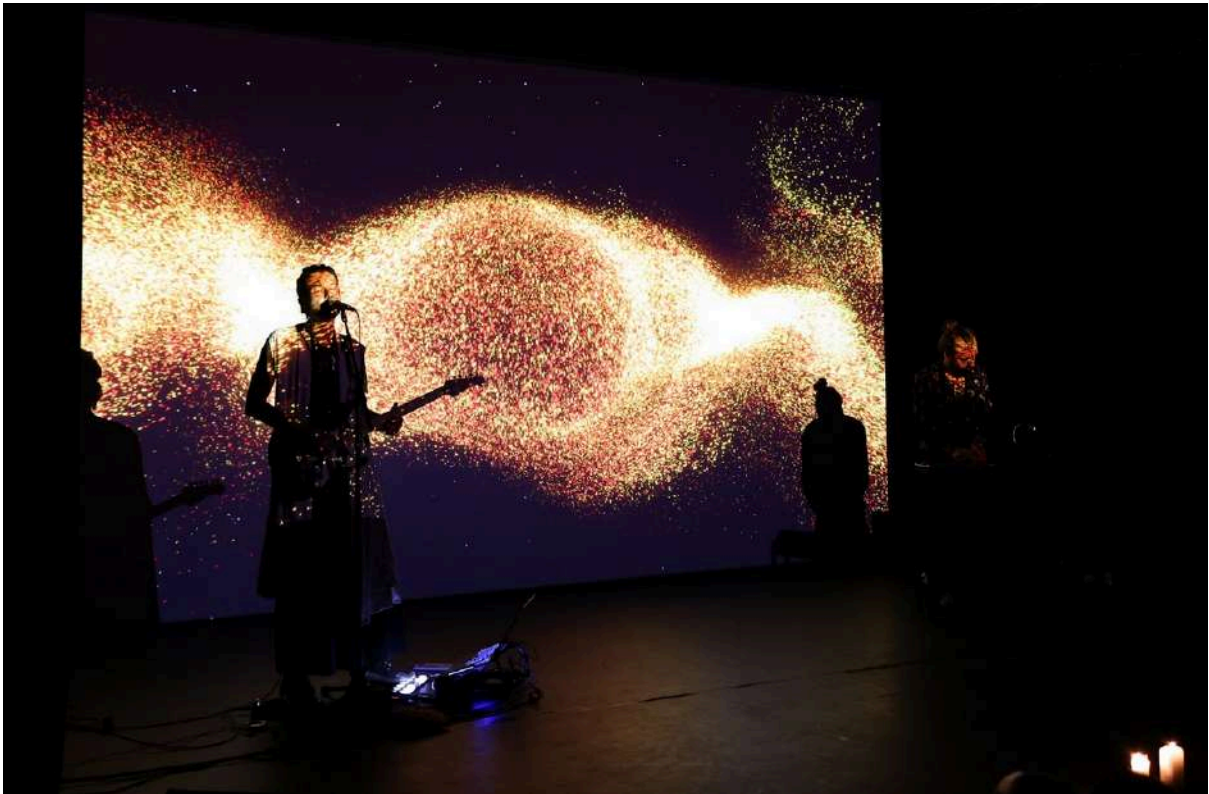
Team with French passport.

2. Video Requirements



- **Projection Surface:**
 - A white surface with a minimum size of 6m x 4m. Larger surfaces are preferred for optimal visual impact.
 - **Video Projector:**
 - The artist can provide an EH461 OPTOMA VP HD 1080p projector with 5k Lumens for the minimum screen size.
 - For larger screens, a more powerful projector will be required.
 - **Alternative Display:**
 - An LED wall with a minimum resolution of 1080p is also acceptable.
 - **Video Desk Dimension**
 - 120cmx60m covered with black taps
-

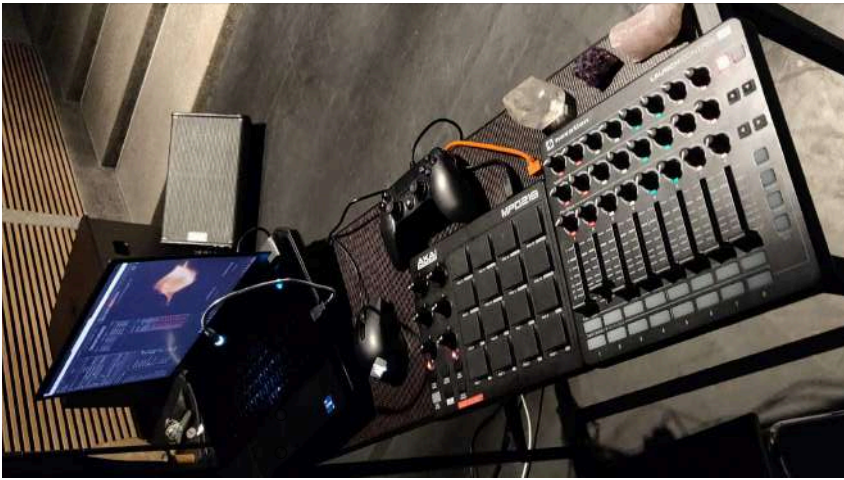
3. Sound Requirements



- **Microphone:**
 - One SM58 microphone with a stand for Gamgie.
 - **Sound Check:**
 - Coordination and sound check with the local artist.
 - **Audio Input:**
 - A sound input from the musician is required to create audio-reactive visual content. Gamgie brings an audio interface with 2 or 4 inputs depending on the collaboration with the artist. This detail will depend with the musician setup.
-

4. Space Requirements

- **Stage Dimensions:**
 - A minimum stage size of 7m x 5m.
- **Audience Setup:**
 - The scenography and performance are designed for a seated audience.
- **Technical Specifications:**
 - Prior to the show or residency, detailed technical specifications of the screens and video projectors must be provided, including possible connections and supported frame rates (30Hz, 60Hz).
 - Video desk will be on stage with Gamgie and the musician on each side.



5. Power Requirements

- **Video Desk:**
 - A 16A power plug is required at the video desk.
 - **Projector:**
 - A separate 16A power plug is required for the video projector.
-

6. Lighting Requirements

- **Stage Lighting:**
 - Lighting should focus on the two artists on stage.
 - **Projection Integrity:**
 - Care must be taken to avoid lighting the projection screen to prevent interference with the visuals.
-

7. Additional Notes

- **Setup Time:**
 - Please allow adequate time for setup, including technical checks for video, sound, and lighting (minimum 3 hours)
 - **Technical Support:**
 - A local technician familiar with the venue's equipment should be available during setup and performance.
 - **Backstage**
 - Heated dressing room equipped with wardrobe, mirror, table, chair, access to water and electricity, with direct access to the stage. **Internet access is necessary.**
 - The performance can fit in a shared stage, ensuring all video and sound checks beforehand. It will be necessary to reinstall the video and sound control room when the stage is changed (see technical requirements for sound and video).
-

Please ensure all these requirements are met to guarantee the best possible performance. For any questions or clarifications, contact contact@gamgie.com
