

# PEACH GARDEN

A multiplayer large-scale Virtual Reality experience



“

Now you're  
dreaming

”

Trailer

## What's Peach Garden ?

A Virtual Reality Journey.

A permission to wander freely in a beautiful and surreal garden where the laws of nature are completely disrupted.

A journey inspired by the famous "Dream journey to peach blossom land" by Korean painter An Gyeon (1350-1447).

A large scale, all audiences, "family friendly", free-roaming experience.



# Technical infos

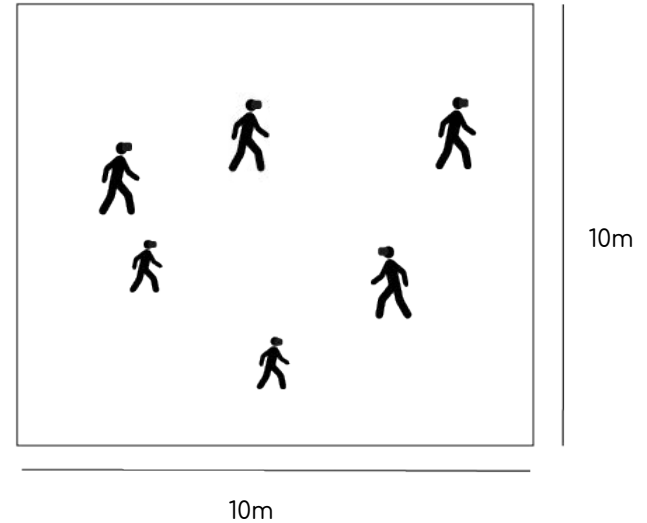


- Up to 6 simultaneous users
- Headset Oculus Quest
- Duration 20'



- Empty room with no direct sunlight
- Ideal 10 x 10 m (100 m<sup>2</sup>)

CHARGING  
STATION



“ In a world where we are constantly running after time, after a goal, I want to invite the user to wander so he can enjoy "simply being present". Peach Garden is thus conceived as an introspective journey where, thanks to the VR medium, he can enjoy a dream bath, for a moment, out of time, out of reality. “

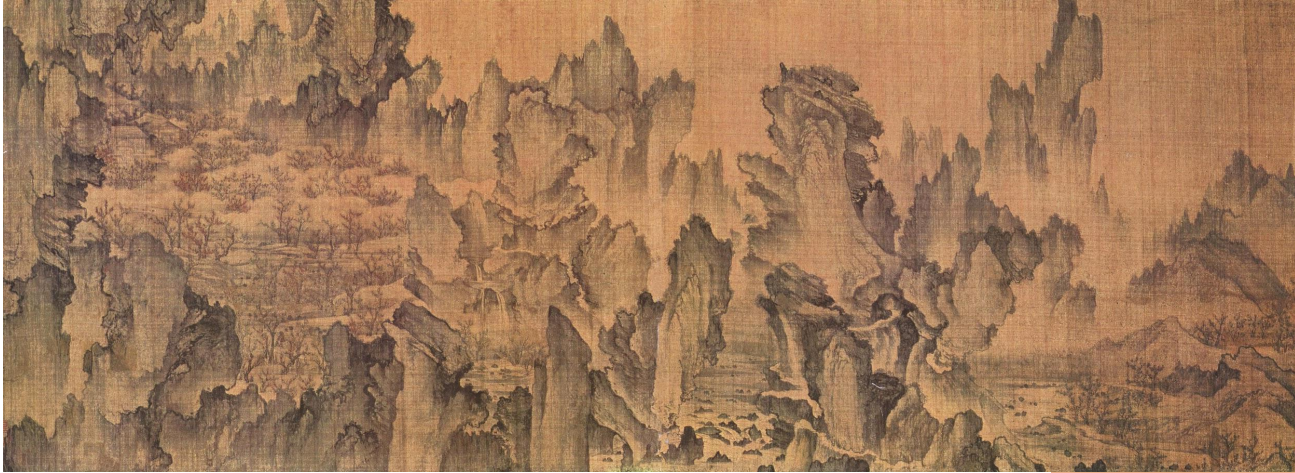


## Hayoun Kwon - Creator of Peach Garden

*Korean multimedia artist & co-founder of Innerspace*

Exploring the possibilities offered by new technologies to play with the confusion between real memories and dreamed actions, between faithful testimony and fantasized interpretation, Kwon works with the construction of individual and collective memory. Her previous works have been shown at Centre Pompidou, MoMA, Palais de Tokyo and the RMN Grand Palais.

# Inspiration

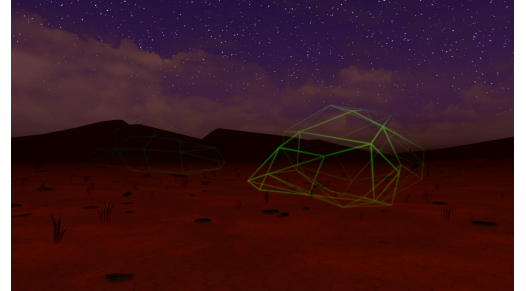
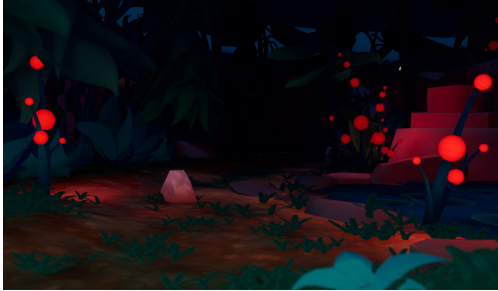


*Dream journey to peach blossom land* by An Gyeon - 1447 - Korea

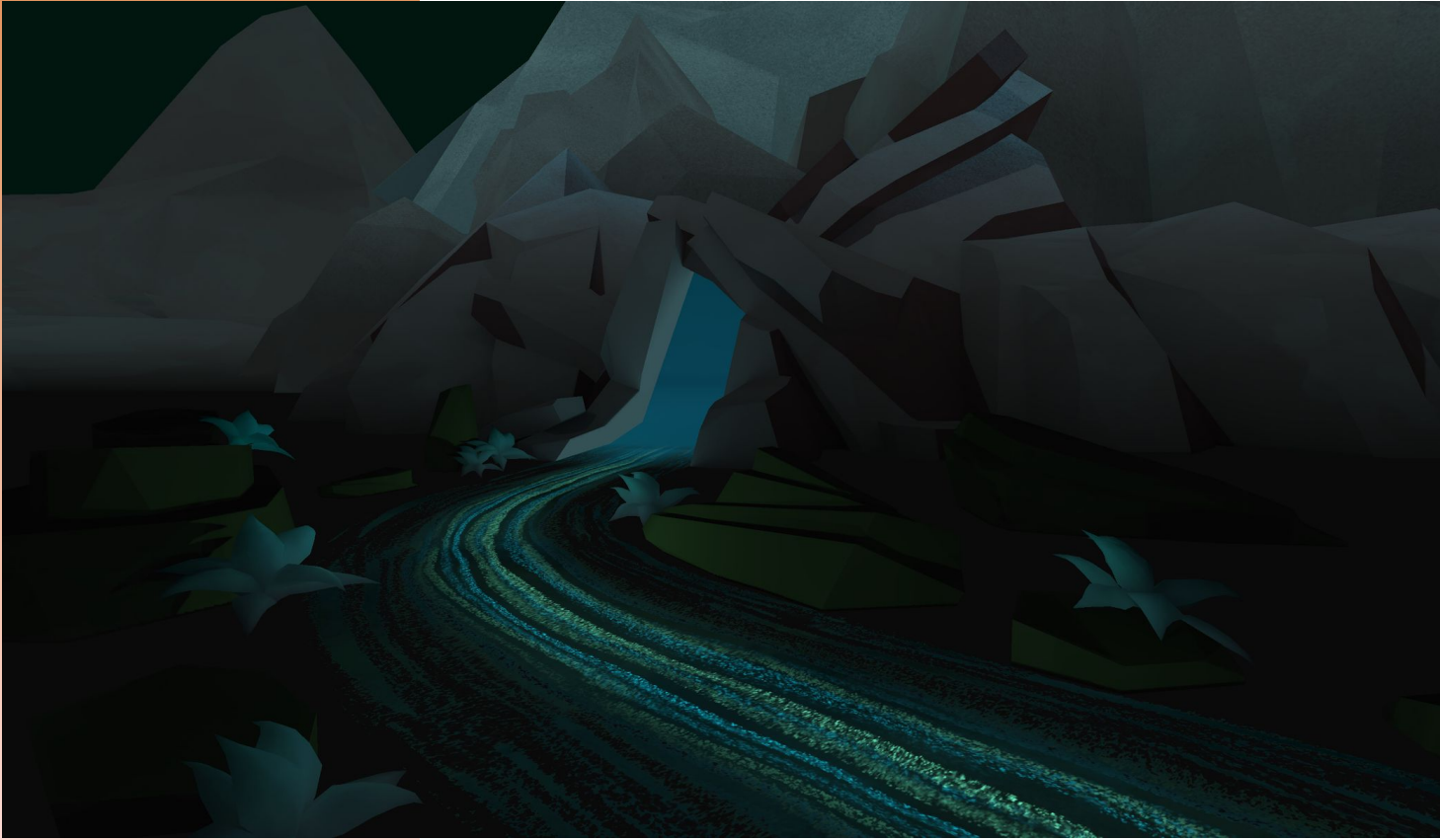
*Dream journey to peach blossom land* is the oldest landscape painting and one of the first representation of an imaginary landscape without any figure. An Gyeon painted it in 1447 at the request of Prince Anpyeong (1418-1453). The prince had described to the painter a dream he wanted to see in painting, inspired itself by the story of Tao Yuanming's *Peach Blossom Spring*. But in its dreams, and in this painting, only remains the landscape of nature.



# Experience environments



# Experience environments



The cave

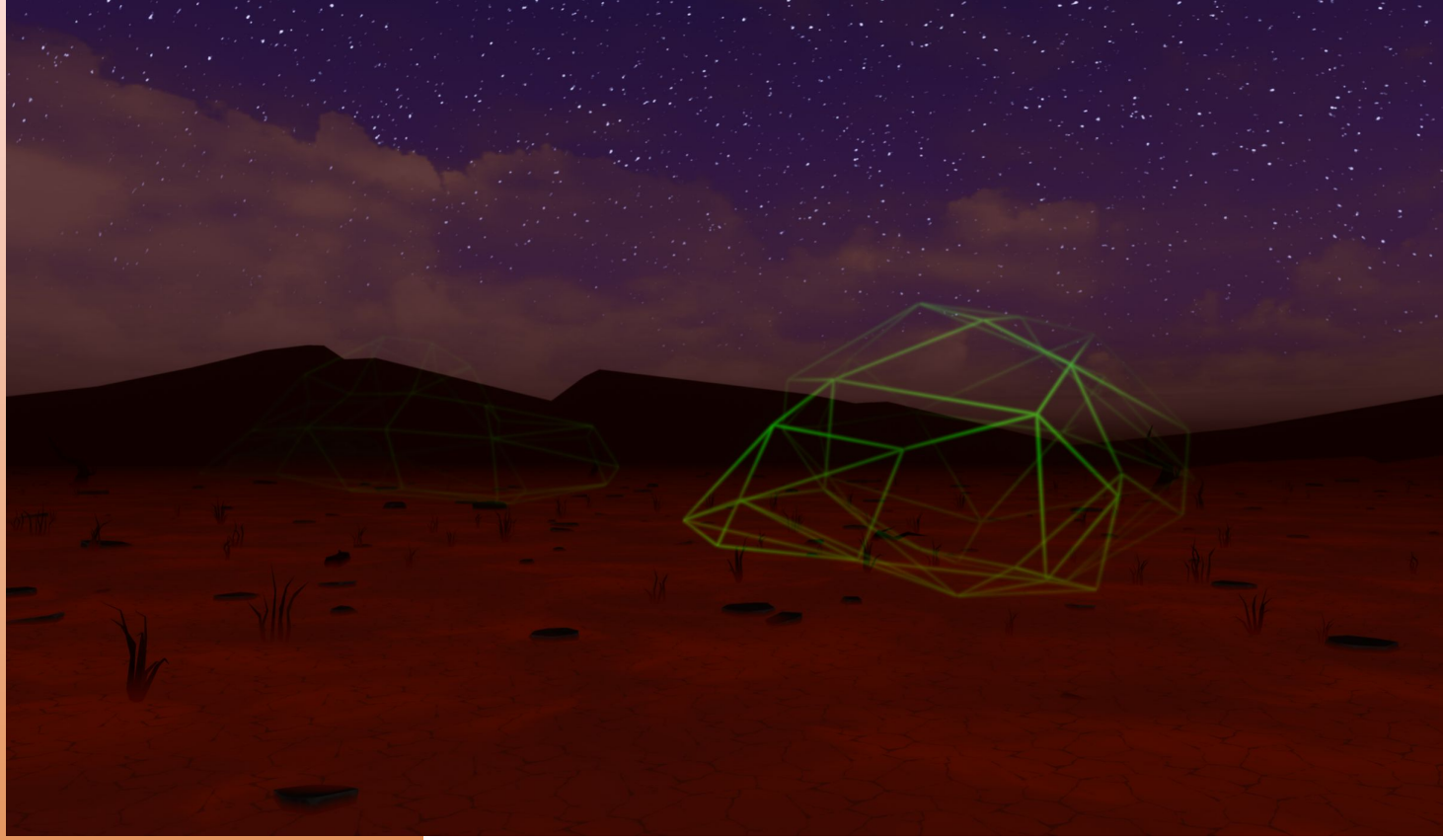




The forest



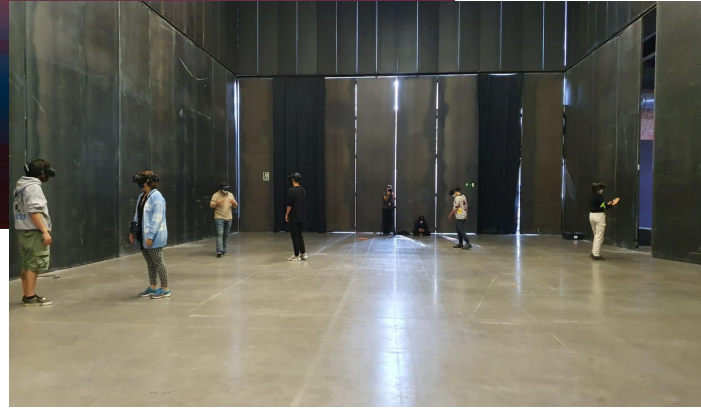
The field



The mountain



The coast



Innerspace  
*Virtual Reality studio*

Founded in 2014, Innerspace is one of the major creative studios in the VR industry, particularly for its sense of innovation and artistry. Selected for numerous festivals, while gathering many awards, their previous works became widely popular among VR users leading the company to greater collaborations

Diversion cinema  
*VR Spaces creation & experiences distributors*

Diversion cinema has been experimenting with Virtual Reality (VR) since 2016 while welcoming visitors into its VR theater every Saturday, and distributed VR since 2018. As a partner to the world's most prestigious festivals, Diversion cinema has developed an expertise in VR space creation, including technical tests to mediation, technical support to scenography, logistics and more.

INNER  SPACE

 DIVERSION  
cinema

Production  
& Distribution  
team



## Contact us!

Paul Bouchard

*VR Acquisitions & distribution*

[paul@diversioncinema.com](mailto:paul@diversioncinema.com)

+33 6 26 62 63 00

International  
distribution by



*[hello@diversioncinema.com](mailto:hello@diversioncinema.com)*

[www.diversioncinema.com](http://www.diversioncinema.com)