

SUPRA ORGA

NISM

JUSTINE EMARD
fiche technique
technical rider



Supraorganism

Justine Emard

2020

Installation (blown glass, robotics, sensor and machine learning system)

Dimensions: about 100m²

Supraorganism is a reactive installation composed of robotic glass sculptures, animated by a machine learning system (an artificial intelligence) and elaborated from data collected from a community of bees.

Guardians of the balance between the earth and heaven, bees have always been a source of inspiration for thinkers. The observation of their intelligence is an indicator of the state of our ecosystem and they are often called upon to think about the present.

Today, the deduction techniques of machines allow us to interpret a large amount of data and to observe the world differently. *Supraorganism* is a work on the memory of bees and their collective intelligence. The creation process is calculated from observed and computer-analysed behavioural patterns. A network of artificial neurons has been trained during a residence at ZKM, with the complicity of Martial Geoffre Rouland, based on the data captured by the artist. This machine learning system, developed specifically for the project, generates predictions: a glimpse of possible futures.

These predictive interstices are embodied in a visual and sound installation. About twenty robotic glass sculptures, suspended on a stainless steel structure, unfold in the exhibition space. The modules come to life thanks to their connected systems, lights and motors, animated in real-time by the artificial intelligence. Thanks to its ambient sensors, the installation reacts subtly to the detection of visitors and adapts to their presence, like an artificial life form.

The unpredictable nature of the system creates a singular experience for each spectator. The light and sound of this new organised being reacts in symbiosis while surprising each other, colliding in a structured, organic and floating constellation. From this ensemble emanates a form of collective intelligence,

SUPRA ORGA NISM

Contact: Justine Emard
+33 6 34 62 04 88
studio@justineemard.com

Fiche technique

Durée de l'installation : 1 jour

Personnes requises : 1 technicien + l'artiste ou son assistant

Description de l'installation : L'installation est constituée de 4 structures en inox démontées. Les structures en tubes sont à assembler (plan fourni). Chaque structure comprend 4 à 6 sculptures en verre. A l'intérieur de chaque sculpture en verre se trouve un mécanisme avec des LEDs et un moteur. Les câbles électriques doivent être fixés le long des tubes de la structure (1 câble par structure).

Chaque sculpture a sa propre adresse IP et est contrôlée via un routeur wifi qui est connecté à l'ordinateur en RJ45.

Matériel nécessaire à fournir :

- un escabeau
- électricité : 4 alimentation 220V + un pour l'ordinateur et un pour le routeur.
- Un moniteur (écran) pour l'ordinateur en HDMI + câble.
- gaffer
- sécuriser les câbles au sol

Liste des éléments fournis :

- Structure en inox, poids (entre 70 et 80 kg) volume (20x50x250cm).
- 21 sculptures en verre robotisées (20 à installer + 1 de rechange)
- 4 alimentations électriques
- 4 câbles
- un ordinateur(mac mini) + 1 câble réseau
- clavier, souris -1 routeur wifi
- 2 capteurs + Raspberry pi

Transport :

- 3 caisses métalliques (100cmx35x55cm chacune)
- la structure en acier inoxydable démontée : poids (entre 70 et 80 kg) volume (20x50x250cm)

Espace nécessaire pour l'installation : environ 100m² (plafond minimum 3m > la structure la plus haute est de 2,80m), espace dans le noir total, un sol de couleur claire et unie

SUPRA ORGA NISM

Contact: Justine Emard
+33 6 34 62 04 88
studio@justineemard.com

Technical Rider

Duration of the setup / configuration: 1 day

People required : 1 technician + the artist or her assistant

Description of the installation: The installation consists of 4 disassembled stainless steel structures. The tubes structure have to be assembled (plan provided). Each structure includes 4 to 6 glass sculptures. Inside each glass sculpture there is a mechanism with LEDs and motor. The electric cables have to be fixed along the tubes of the structure. Each sculpture has its own IP address and is controlled via a wifi router which is connected to the computer in RJ45.

Material required:

- one stepladder
- electricity: 4 x 220V power supply + one for the computer and one for the router.
- one monitor (screen) for the computer in HDMI + cable
- gaffer
- to securise the cables on the floor

List of provided items:

- Structure in stainless steel, weight (between 70 and 80 kg) volume (20x50x250cm)
- 21 robotic sculptures in glass (20 to install + 1 spare)
- 4 power supplies
- 4 cables
- a computer(mac mini) + 1 network câble
- keyboard, mouse
- 1 wifi router
- 2 sensors + Raspberry pi

Transport:

items to transport:

- 3 metal boxes (100cmx35x55cm each)
- the disassembled stainless steel structure:weight (between 70 and 80 kg) volume (20x50x250cm)

Required space for the installation: approx. 100m² (minimum ceiling 3m > the highest structure is 2.80m), a **total black space**, a light-color and uniform floor.



Exhibition view, Abbaye aux Dames, Caen



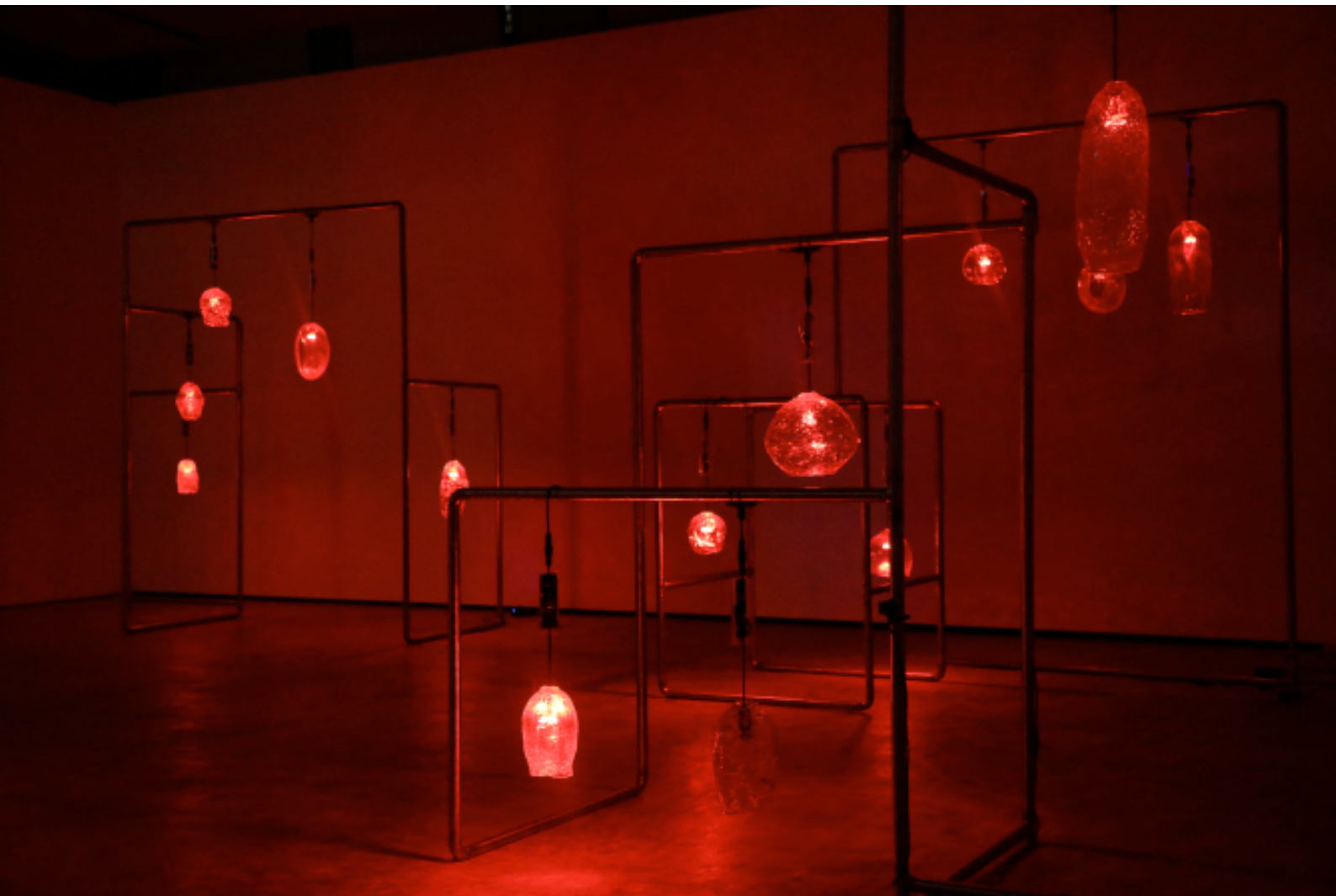
Exhibition view
IMaI, Bruxelles, Belgium



Exhibition views
Teatros del Canal, Madrid, Spain
IMaI, Bruxelles, Belgium



Exhibition view, Teatros del Canal, Madrid, Spain



Details

Space required : about 100m² (10mx10m) (minimum ceiling 3m > the highest structure is 2.80m)

Black space, in the total dark

Clear floor

Supraorganism is composed by 4 stainless steel structures where 4 to 6 glass robots are hanged (20 in total). Every structure needs a 220V power.

Every thing is controled by a computer and a router (deliver by the artist). The piece doesn't need internet to run. 3D maps and technical documents on demand : studio@justineemard.com

-

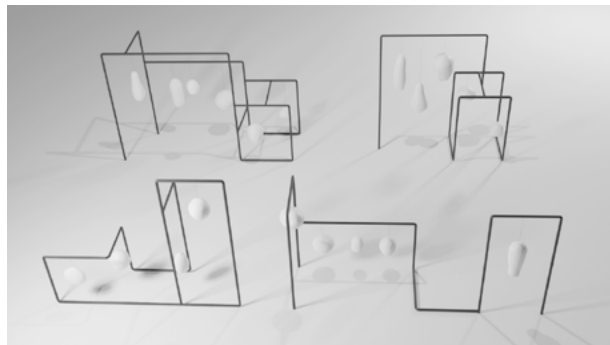
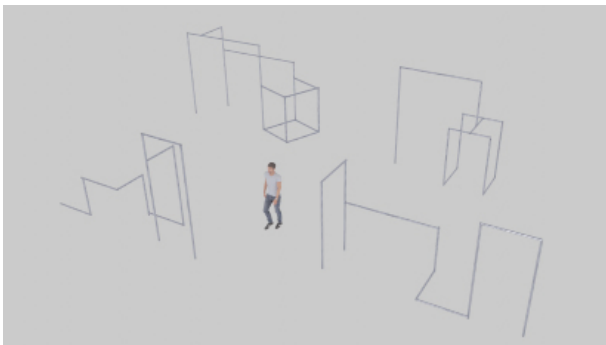
Espace requis : environ 100m² (10mx10m) (plafond minimum 3m > la structure la plus haute est de 2.80m)

Espace noir, dans l'obscurité totale

Sol clair

Supraorganism est composé de 4 structures en inox où sont suspendus 4 à 6 robots en verre (20 au total). Chaque structure nécessite une alimentation électrique de 220V.

Tout est contrôlé par un ordinateur et un routeur (fournis par l'artiste). L'œuvre n'a pas besoin d'internet pour fonctionner. Plans 3D et documents techniques sur demande : studio@justineemard.com



Transport

- 3 metal boxes (100cmx35x55cm each)

- the disassembled stainless steel structure: weight (between 70 and 80 kg) volume (20x50x250cm)

- 3 caisses métalliques (100cmx35x55cm chacune)

- la structure en acier inoxydable démontée : poids (entre 70 et 80 kg) volume (20x50x250cm)

