

TECHNICAL & HOSPITALITY RIDER

VERLA TOUR

IMMERSION

Live A/V Interactive & Participative

as of February 2023

1. INTRODUCTION

The following rider is an integral part of the contract with VERLATOIR.

Please read carefully and contact either Charles (tourmanagement) in case you have further questions or can't provide everything as mentioned in the rider at least two weeks prior to the show.

We have always managed to find a solution everyone is happy with.

The local promoter must provide all necessary permits, licences and thoroughfare approvals. A smooth set-up and dismantling must be ensured at all time. Additional costs will be to the disadvantage of the local promoter.

The local promoter has to provide insurance concerning the loss or damage of the artists' equipment, personal injury, event liability etc. for the whole time period of the engagement. The band will be absolved from all obligations that are mentioned in the contract in the case of acts of nature, accidents, transportation problems, quarantine, strikes, political unrest, illness, instructions by higher authorities or all other reasons, that are outside the spree of influence of the band.

2. CONTACTS

Tour Management

Charles Lagueritte

charles.technique@gmail.com

+33 6 81 18 20 99

Public Relations

Mathilde Thiney

thineymath@gmail.com

+33 6 41 92 47 03

FOH-Sound

Benoit Moritz

benturtle77@gmail.com

+33 6 03 18 11 46

Video operator

Julien Appert

julien.appert@gmail.com

+33 6 80 16 30 47

Lighting operator

Illan Lacoudre

illanLacoudre@hotmail.com

+33 6 86 21 88 91

Data Flaw

Romain Astouric

rom.astc@gmail.com

+33 7 77 33 73 90

3. TRAVEL

Our travel party varies from 4-6 people. Please contact our production manager Charles charles.technique@gmail.com min 2 weeks prior to discuss the final number of people we will be travelling with.

WAY OF TRAVEL

We are travelling with a Crew Van type 3L-2H and sometimes train for artist, production leader. Therefore, we will need a suitable parking space. Preferably close to the loading entrance and in a safe, non-public area.

4. STAFF & BACKSTAGE

STAGEHANDS

Please provide a minimum of 2 (English/French speaking) stagehands, who can support the VERLATOUR crew during load-in, set-up, dismantling and load-out.

TECHNICAL STAFF

Please provide minimum of 3 (English/French speaking, one for each: FoH, lights, Stageman) engineers -familiar with your installed systems- to assist our engineers from load in and for the duration of the show.

SECURITY

Professional security must be on-site in order to look after the audience, all security related access points and the FoH. It is our priority that the event runs peacefully. The security staff may not be armed.

The staff at the entry control must be polite but at the same time thorough and decisive. For female attendees, female security staff must be on-site. The backstage area must be safeguarded during the whole time the public has access to the venue.

BACKSTAGE

Please provide at least one lockable room exclusively for the CREW. We'd appreciate it being appropriately furnished with sofas, tables, chairs, rubbish bins etc.

The catering should be, when possible, served in a separate area, which can fit the whole travel party.

5. STAGE

Please provide a professional and steady stage according to our requirements. The set-up must be completed upon our arrival. We need two lit-up stage access points with handrails on each side. The front of stage as well as all areas visible to the crowd must be covered up with black fabric. The stage needs to be cleared, clean, dry, splinterproof and joint-tight.

Please see the attached stage plot.

Please note that we have the possibility of adapting our scenography according to the dimensions of stage / room.

The usable size of the stage should add up to at least 6x4m.

These measurements also apply to the performance area. We require a clearance of 4,00m.

We have 6 interaction points in the public area.

Please provide lot of cable bridge for power and RJ45 cable.

- 4 Percussive sound & leds devices (drum pads) allowing the public to come and play several step sequencers while hitting a pad, what they played is recorded and quantized.
- 2 Audio and Video effects control totems equipped with various interactive devices (midi controllers, touchscreen,...)

6. SOUND FOH

P.A SYSTEM & AUDIO DESK

The system must provide consistent full range coverage of the venue, and be capable of producing 102db A / 118db C - weighted, of undistorted program at the mixing position and evenly around the venue (before limiting and after equalisation).

The PA system shall also be free of all earth hums, buzzes and crackles before VERLATOUR Engineers have access to the system.

Professional PA System with Powerful Cardioid SUB Bass System are preferred. Please note, home built or sub-standard systems are NOT accepted.

Only professional **DIGITAL** CONSOLE.

MONITOR WEDGES

VERLATOUR need 2 sidefills and mono wedges, which shall be provided stage left and right and fit the size of the stage.

| | | |
|------|-------------------|--------------------------|
| IN 1 | Tracks L | Passive DI with Link out |
| IN 2 | Tracks R | Passive DI with Link out |
| IN 3 | Main Vocal | Our mic |
| IN 4 | Talk Stage to FOH | Mic with switch |

| | | |
|-------|-------------------|-----------------|
| OUT 1 | Main Vocal loop | xlr |
| OUT 2 | Talk FOH to Stage | xlr |
| OUT 3 | Wedge | 15" or 2x12" |
| OUT 4 | Side L | 3 ways Speakers |
| OUT 5 | Side R | 3 ways Speakers |

NEED ONE PENCIL STATIC MIC FOR AMBIANCE LIKE KM184

7. LIGHTING

DESK

We need GrandMA 2 or 3 console with last update,
please provide a table of 1,5m width minimum and an height of
approximately 1m,

placed next to our FoH engineer and video operator.

We need internet connection via RJ45 cable at FOH.

VERLATOUR LIGHTING / VIDEO GEAR

VERLATOUR travels with an own Cam stands.

Please provide :

8mx2m ledscreen with tiny pitch.

OR

8mx2m mesh screen and 1x video Projector 18000 Lumens min

Power Distrib In : 32A 230V Out : 16A 230V

CEE 3-phase, dedicated only for VERLATOUR lighting.

We also require one free DMX line to FOH for All Kit.

Power for lights and sound must strictly be separated to avoid
interferences from the fluorescent tubes.

VENUES LIGHT SYSTEM

We expect a well-equipped « state-of-the-art » lighting system on
stage, with devices of high quality manufacturers, such as Robe,
Martin, Clay Paky, GLP, SGM etc.

Please see the attached stage plot.

8. POWER

All power up equipment is 230V 50Hz.

| | | |
|-------------|-------|-------------------------------|
| Powerlines: | 4 x 8 | 230 V @t FoH |
| | 8 x | 230 V 16A On stage |
| | 8 x | Graduate line for fluorescent |
| | 3 x | 230 V In Public Area |

9. HOSPITALITY

Shower facilities (min. 2) have to be available either on-site or in hotel rooms (min 3*** hotels; distance from venue max. 800m, alternatively shuttles must be provided).

> If the facilities are on site, please provide pre-washed towels (12)

CATERING

Please provided All Day Catering (from get in) with snacks (sweet & savoury, e.g. nuts, dried fruit, crackers, biscuits), coffee and tea, fresh vegetables+dips and fresh fruits.

Lunch / Dinner

warm meal for the whole travel party
(vegetarian/vegan option, no fast food) + salad

Drinks

Water, soda, soft, coffee, tea.

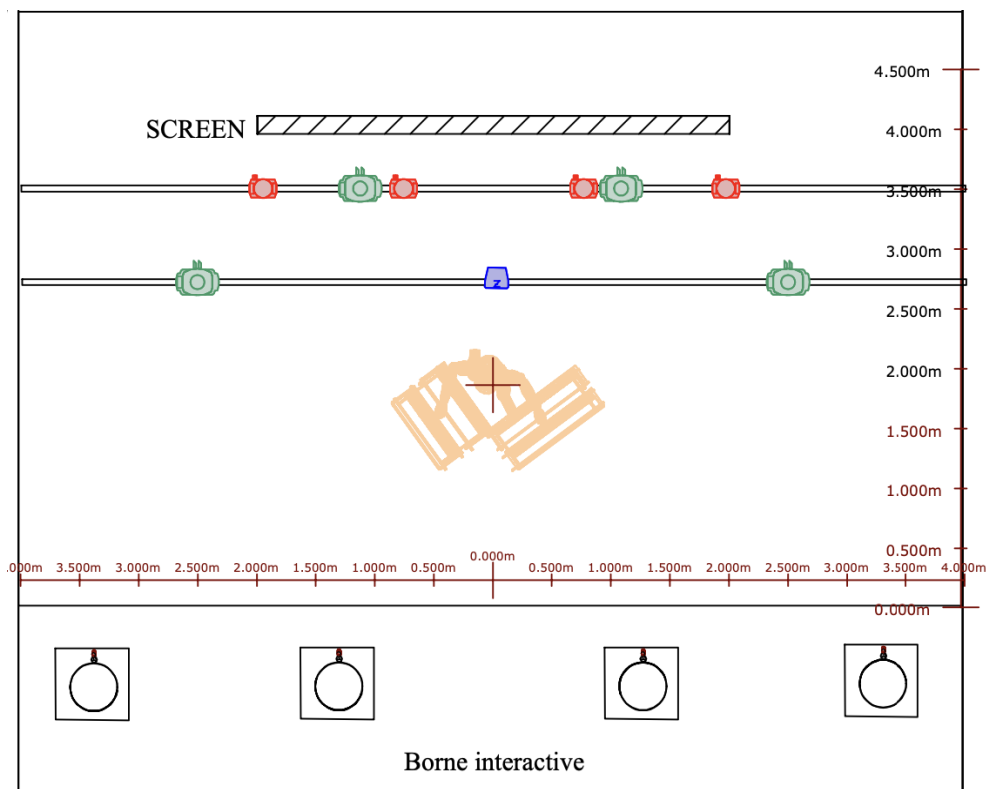
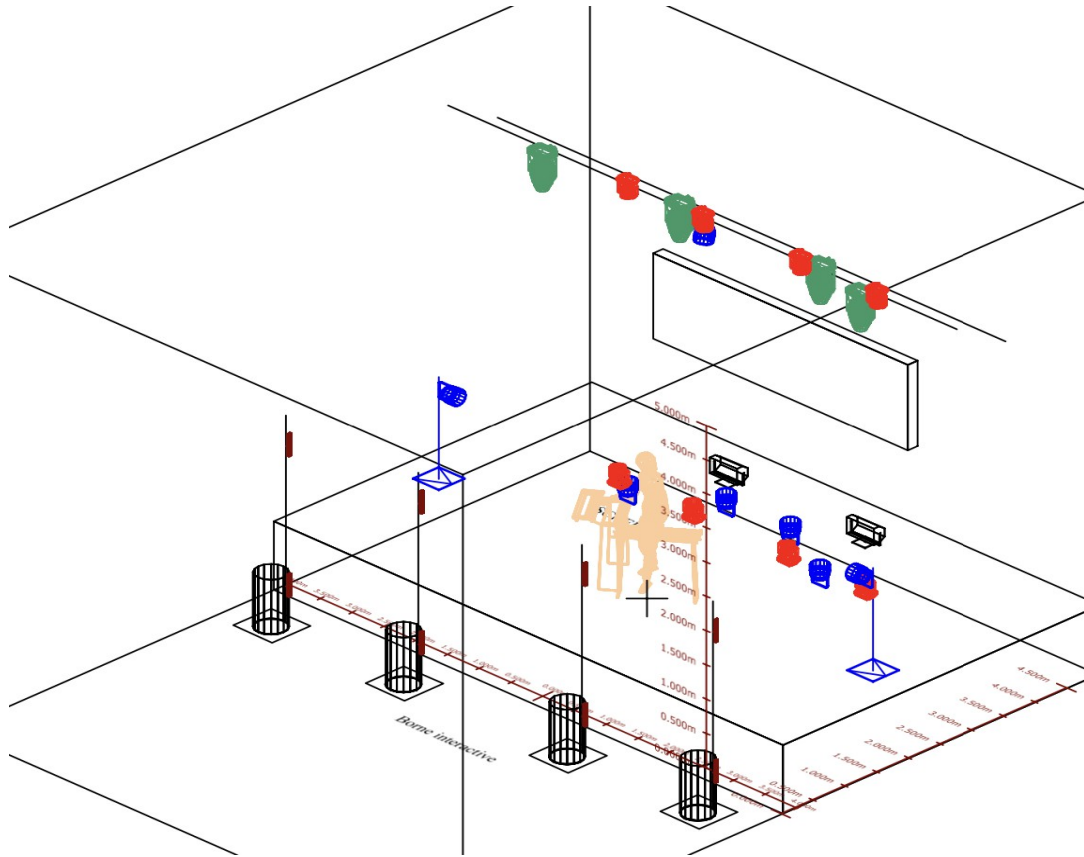
Red wine, white wine, beer, and spirits are highly appreciated.

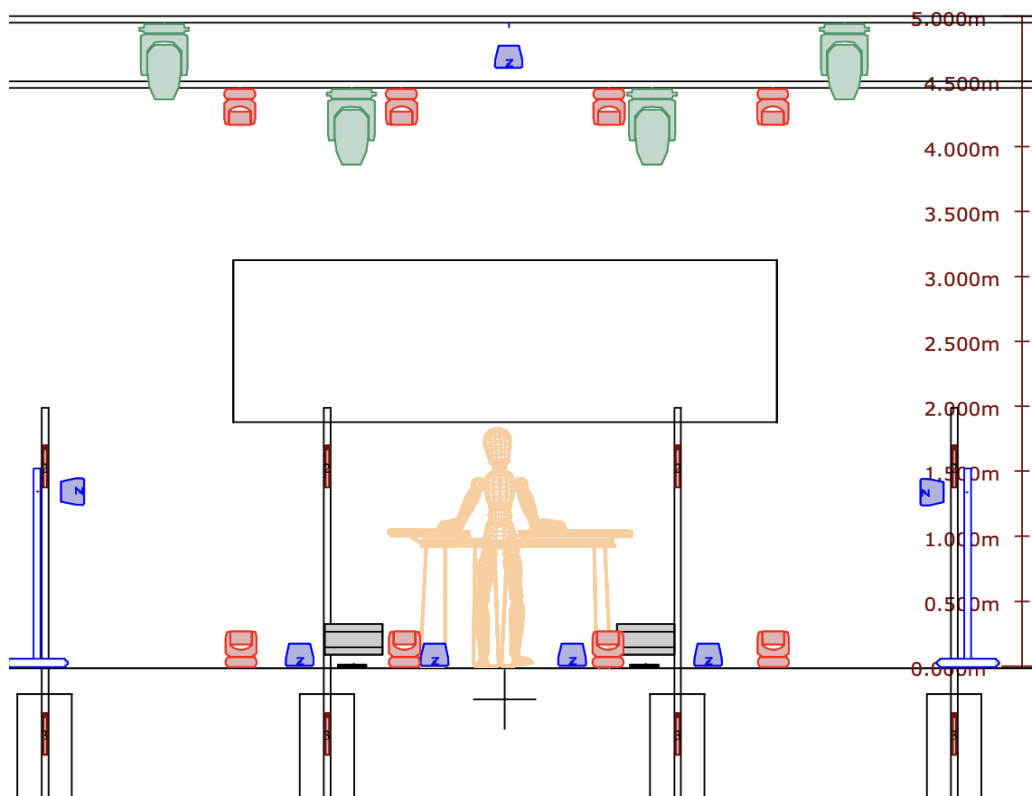
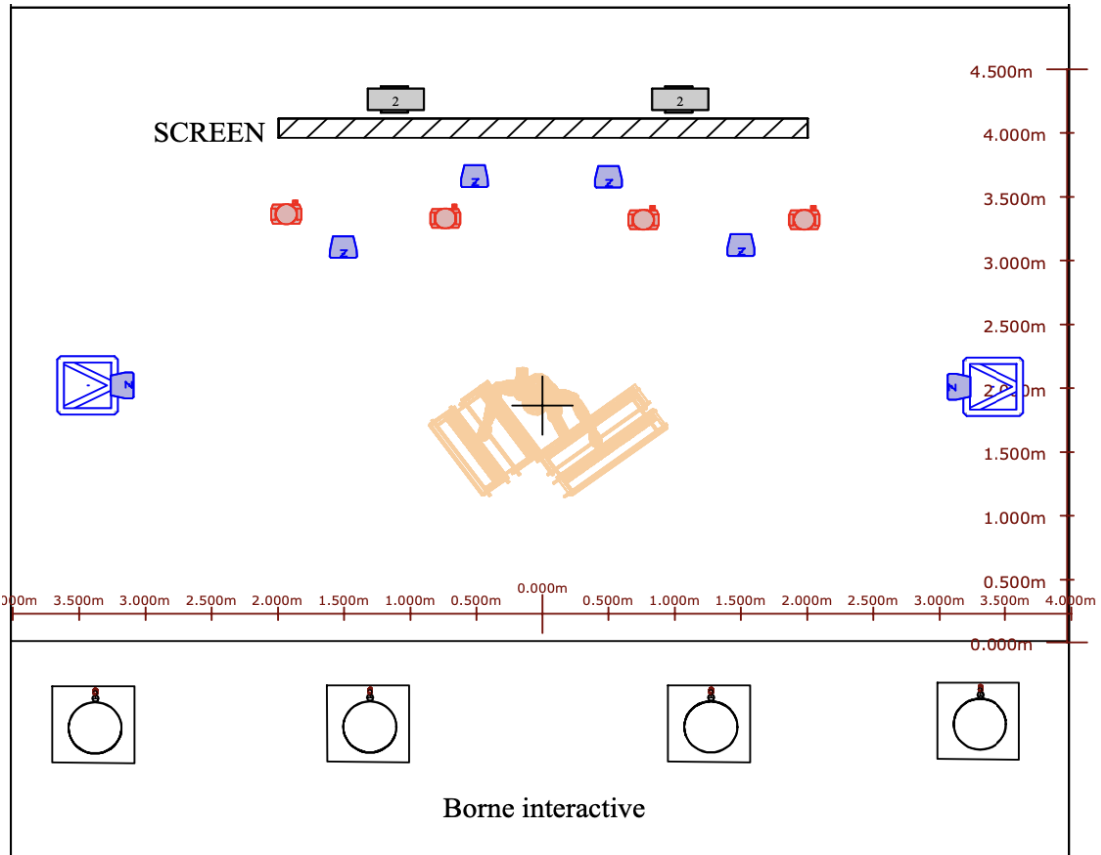
Promoter: Date, Signature





Please send a signed copy to charles.technique@gmail.com

11. ATTACHEMENTS

Lighting Plot :





-  PAR LED x6 (rush, perfect 150, zoom kolor etc ...)
-  SPOT X4 (mystral,viper,bmfl,viva etc...)
-  BEAM X 8 (led beam 150, spikie , super spikie)
-  STROBE X 2

Interactive Points :

